



Transmission of material in this news release is embargoed until 8:30 a.m. (ET) Friday, April 7, 2023

USDL-23-0630

Technical information:

Household data: (202) 691-6378 • cpsinfo@bls.gov • www.bls.gov/cps
 Establishment data: (202) 691-6555 • cesinfo@bls.gov • www.bls.gov/ces

Media contact: (202) 691-5902 • PressOffice@bls.gov

THE EMPLOYMENT SITUATION — MARCH 2023

Total **nonfarm payroll employment** rose by 236,000 in March, and the **unemployment rate** changed little at 3.5 percent, the U.S. Bureau of Labor Statistics reported today. Employment continued to trend up in leisure and hospitality, government, professional and business services, and health care.

Chart 1. Unemployment rate, seasonally adjusted, March 2021 – March 2023

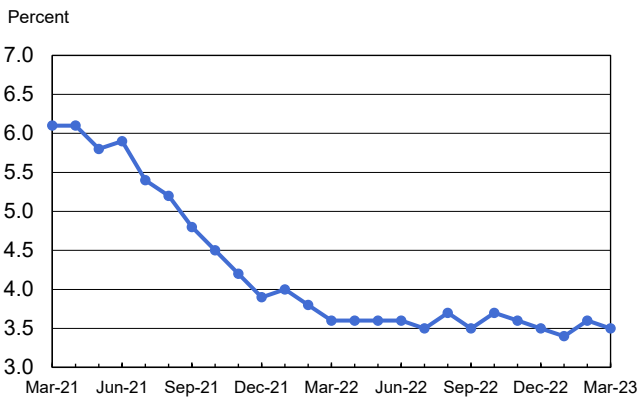
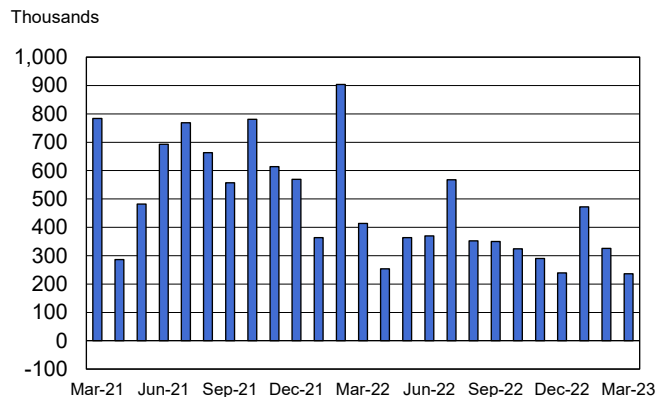


Chart 2. Nonfarm payroll employment over-the-month change, seasonally adjusted, March 2021 – March 2023



This news release presents statistics from two monthly surveys. The household survey measures labor force status, including unemployment, by demographic characteristics. The establishment survey measures nonfarm employment, hours, and earnings by industry. For more information about the concepts and statistical methodology used in these two surveys, see the Technical Note.

Household Survey Data

Both the **unemployment rate**, at 3.5 percent, and the number of **unemployed persons**, at 5.8 million, changed little in March. These measures have shown little net movement since early 2022. (See table A-1.)

Among the **major worker groups**, the unemployment rate for Hispanics decreased to 4.6 percent in March, essentially offsetting an increase in the prior month. The unemployment rates for adult men (3.4 percent), adult women (3.1 percent), teenagers (9.8 percent), Whites (3.2 percent), Blacks (5.0 percent), and Asians (2.8 percent) showed little or no change over the month. (See tables A-1, A-2, and A-3.)

Among the unemployed, the number of **permanent job losers** increased by 172,000 to 1.6 million in March, and the number of **reentrants** to the labor force declined by 182,000 to 1.7 million. (Reentrants are persons who previously worked but were not in the labor force prior to beginning their job search.) (See table A-11.)

The number of **long-term unemployed** (those jobless for 27 weeks or more) was little changed at 1.1 million in March. These individuals accounted for 18.9 percent of all unemployed persons. (See table A-12.)

The **labor force participation rate**, at 62.6 percent, continued to trend up in March. The **employment-population ratio** edged up over the month to 60.4 percent. These measures remain below their pre-pandemic February 2020 levels (63.3 percent and 61.1 percent, respectively). (See table A-1.)

The number of persons employed **part time for economic reasons** was essentially unchanged at 4.1 million in March. These individuals, who would have preferred full-time employment, were working part time because their hours had been reduced or they were unable to find full-time jobs. (See table A-8.)

The number of persons **not in the labor force who currently want a job** was little changed at 4.9 million in March and has returned to its February 2020 level. These individuals were not counted as unemployed because they were not actively looking for work during the 4 weeks preceding the survey or were unavailable to take a job. (See table A-1.)

Among those not in the labor force who wanted a job, the number of persons **marginally attached to the labor force** was little changed at 1.3 million in March. These individuals wanted and were available for work and had looked for a job sometime in the prior 12 months but had not looked for work in the 4 weeks preceding the survey. The number of **discouraged workers**, a subset of the marginally attached who believed that no jobs were available for them, also was little changed over the month at 351,000. (See Summary table A.)

Establishment Survey Data

Total **nonfarm payroll employment** increased by 236,000 in March, compared with the average monthly gain of 334,000 over the prior 6 months. In March, employment continued to trend up in leisure and hospitality, government, professional and business services, and health care. (See table B-1.)

Leisure and hospitality added 72,000 jobs in March, lower than the average monthly gain of 95,000 over the prior 6 months. Most of the job growth occurred in food services and drinking places, where employment rose by 50,000 in March. Employment in leisure and hospitality is below its pre-pandemic February 2020 level by 368,000, or 2.2 percent.

Government employment increased by 47,000 in March, the same as the average monthly gain over the prior 6 months. Overall, employment in government is below its February 2020 level by 314,000, or 1.4 percent.

Employment in **professional and business services** continued to trend up in March (+39,000), in line with the average monthly growth over the prior 6 months (+34,000). Within the industry, employment in professional, scientific, and technical services continued its upward trend in March (+26,000).

Over the month, **health care** added 34,000 jobs, lower than the average monthly gain of 54,000 over the prior 6 months. In March, job growth occurred in home health care services (+15,000) and hospitals (+11,000). Employment continued to trend up in nursing and residential care facilities (+8,000).

Employment in **social assistance** continued to trend up in March (+17,000), in line with the average monthly growth over the prior 6 months (+22,000).

In March, employment in **transportation and warehousing** changed little (+10,000). Couriers and messengers (+7,000) and air transportation (+6,000) added jobs, while warehousing and storage lost jobs (-12,000). Employment in transportation and warehousing has shown little net change in recent months.

Employment in **retail trade** changed little in March (-15,000). Job losses in building material and garden equipment and supplies dealers (-9,000) and in furniture, home furnishings, electronics, and appliance retailers (-9,000) were partially offset by a job gain in department stores (+15,000). Retail trade employment is little changed on net over the year.

Employment showed little change over the month in other major industries, including **mining, quarrying, and oil and gas extraction; construction; manufacturing; wholesale trade; information; financial activities; and other services.**

In March, **average hourly earnings for all employees** on private nonfarm payrolls rose by 9 cents, or 0.3 percent, to \$33.18. Over the past 12 months, average hourly earnings have increased by 4.2 percent. In March, average hourly earnings of private-sector **production and nonsupervisory employees** rose by 9 cents, or 0.3 percent, to \$28.50. (See tables B-3 and B-8.)

The **average workweek for all employees** on private nonfarm payrolls edged down by 0.1 hour to 34.4 hours in March. In manufacturing, the average workweek was unchanged at 40.3 hours, and overtime remained at 3.0 hours. The average workweek for **production and nonsupervisory employees** on private nonfarm payrolls was unchanged at 33.9 hours. (See tables B-2 and B-7.)

The change in total nonfarm payroll employment for January was revised down by 32,000, from +504,000 to +472,000, and the change for February was revised up by 15,000, from +311,000 to +326,000. With these revisions, employment in January and February combined is 17,000 lower than previously reported. (Monthly revisions result from additional reports received from businesses and government agencies since the last published estimates and from the recalculation of seasonal factors.)

The Employment Situation for April is scheduled to be released on Friday, May 5, 2023, at 8:30 a.m. (ET).

HOUSEHOLD DATA

Summary table A. Household data, seasonally adjusted

[Numbers in thousands]

Category	Mar. 2022	Jan. 2023	Feb. 2023	Mar. 2023	Change from: Feb. 2023-Mar. 2023
Employment status					
Civilian noninstitutional population.....	263,444	265,962	266,112	266,272	160
Civilian labor force.....	164,301	165,832	166,251	166,731	480
Participation rate.....	62.4	62.4	62.5	62.6	0.1
Employed.....	158,328	160,138	160,315	160,892	577
Employment-population ratio.....	60.1	60.2	60.2	60.4	0.2
Unemployed.....	5,972	5,694	5,936	5,839	-97
Unemployment rate.....	3.6	3.4	3.6	3.5	-0.1
Not in labor force.....	99,144	100,130	99,861	99,541	-320
Unemployment rates					
Total, 16 years and over.....	3.6	3.4	3.6	3.5	-0.1
Adult men (20 years and over).....	3.4	3.2	3.3	3.4	0.1
Adult women (20 years and over).....	3.3	3.1	3.2	3.1	-0.1
Teenagers (16 to 19 years).....	10.1	10.3	11.1	9.8	-1.3
White.....	3.2	3.1	3.2	3.2	0.0
Black or African American.....	6.2	5.4	5.7	5.0	-0.7
Asian.....	2.8	2.8	3.4	2.8	-0.6
Hispanic or Latino ethnicity.....	4.2	4.5	5.3	4.6	-0.7
Total, 25 years and over.....	2.9	2.8	2.9	2.9	0.0
Less than a high school diploma.....	5.3	4.5	5.8	4.8	-1.0
High school graduates, no college.....	4.0	3.7	3.6	4.0	0.4
Some college or associate degree.....	3.1	2.9	3.2	3.0	-0.2
Bachelor's degree and higher.....	2.0	2.0	2.0	2.0	0.0
Reason for unemployment					
Job losers and persons who completed temporary jobs.....	2,840	2,529	2,752	2,949	197
Job leavers.....	789	884	891	845	-46
Reentrants.....	1,992	1,817	1,847	1,665	-182
New entrants.....	472	531	515	492	-23
Duration of unemployment					
Less than 5 weeks.....	2,303	1,946	2,289	2,272	-17
5 to 14 weeks.....	1,688	1,785	1,845	1,733	-112
15 to 26 weeks.....	552	890	805	734	-71
27 weeks and over.....	1,429	1,111	1,057	1,104	47
Employed persons at work part time					
Part time for economic reasons.....	4,168	4,050	4,067	4,102	35
Slack work or business conditions.....	2,883	2,685	2,840	2,873	33
Could only find part-time work.....	1,045	999	859	882	23
Part time for noneconomic reasons.....	20,890	22,083	21,856	21,433	-423
Persons not in the labor force					
Marginally attached to the labor force.....	1,372	1,354	1,396	1,289	-107
Discouraged workers.....	374	342	363	351	-12

NOTE: Persons whose ethnicity is identified as Hispanic or Latino may be of any race. Detail for the seasonally adjusted data shown in this table will not necessarily add to totals because of the independent seasonal adjustment of the various series. Updated population controls are introduced annually with the release of January data.

ESTABLISHMENT DATA
Summary table B. Establishment data, seasonally adjusted

Category	Mar. 2022	Jan. 2023	Feb. 2023 ^p	Mar. 2023 ^p
EMPLOYMENT BY SELECTED INDUSTRY (Over-the-month change, in thousands)				
Total nonfarm.....	414	472	326	236
Total private.....	423	353	266	189
Goods-producing.....	91	41	11	-7
Mining and logging.....	6	4	0	3
Construction.....	23	26	12	-9
Manufacturing.....	62	11	-1	-1
Durable goods ¹	43	0	-2	1
Motor vehicles and parts.....	27.4	-4.6	1.3	3.7
Nondurable goods.....	19	11	1	-2
Private service-providing.....	332	312	255	196
Wholesale trade.....	35.9	8.9	10.9	6.7
Retail trade.....	-22.1	22.3	41.3	-14.6
Transportation and warehousing.....	25.4	31.7	-20.5	10.4
Utilities.....	0.5	-1.6	-1.2	1.5
Information.....	26	-23	-10	6
Financial activities.....	15	-1	-1	-1
Professional and business services ¹	133	44	55	39
Temporary help services.....	28.3	16.6	3.4	-10.7
Private education and health services ¹	54	111	85	65
Health care and social assistance.....	44.0	77.3	73.0	50.8
Leisure and hospitality.....	54	99	90	72
Other services.....	11	21	5	11
Government.....	-9	119	60	47
(3-month average change, in thousands)				
Total nonfarm.....	561	334	346	345
Total private.....	555	271	284	269
WOMEN AND PRODUCTION AND NONSUPERVISORY EMPLOYEES AS A PERCENT OF ALL EMPLOYEES ²				
Total nonfarm women employees.....	49.7	49.8	49.8	49.8
Total private women employees.....	48.3	48.4	48.3	48.4
Total private production and nonsupervisory employees.....	81.5	81.3	81.3	81.3
HOURS AND EARNINGS ALL EMPLOYEES Total private				
Average weekly hours.....	34.7	34.6	34.5	34.4
Average hourly earnings.....	\$31.83	\$33.02	\$33.09	\$33.18
Average weekly earnings.....	\$1,104.50	\$1,142.49	\$1,141.61	\$1,141.39
Index of aggregate weekly hours (2007=100) ³	112.7	115.1	115.0	114.9
Over-the-month percent change.....	0.4	0.8	-0.1	-0.1
Index of aggregate weekly payrolls (2007=100) ⁴	171.5	181.8	182.0	182.2
Over-the-month percent change.....	1.0	1.2	0.1	0.1
DIFFUSION INDEX (Over 1-month span) ⁵				
Total private (250 industries).....	79.0	64.6	57.4	60.2
Manufacturing (72 industries).....	78.5	52.8	47.9	56.3

¹ Includes other industries, not shown separately.

² Data relate to production employees in mining and logging and manufacturing, construction employees in construction, and nonsupervisory employees in the service-providing industries.

³ The indexes of aggregate weekly hours are calculated by dividing the current month's estimates of aggregate hours by the corresponding annual average aggregate hours.

⁴ The indexes of aggregate weekly payrolls are calculated by dividing the current month's estimates of aggregate weekly payrolls by the corresponding annual average aggregate weekly payrolls.

⁵ Figures are the percent of industries with employment increasing plus one-half of the industries with unchanged employment, where 50 percent indicates an equal balance between industries with increasing and decreasing employment.

p Preliminary

NOTE: Data have been revised to reflect March 2022 benchmark levels and updated seasonal adjustment factors.

Frequently Asked Questions about Employment and Unemployment Estimates

1. Why are there two monthly measures of employment?

The household survey and establishment survey both produce sample-based estimates of employment, and both have strengths and limitations. The establishment survey employment series has a smaller margin of error on the measurement of month-to-month change than the household survey because of its much larger sample size. An over-the-month employment change of about 130,000 is statistically significant in the establishment survey, while the threshold for a statistically significant change in the household survey is about 600,000. However, the household survey has a more expansive scope than the establishment survey because it includes self-employed workers whose businesses are unincorporated, unpaid family workers, agricultural workers, and private household workers, who are excluded by the establishment survey. The household survey also provides estimates of employment for demographic groups. For more information on the differences between the two surveys, please visit www.bls.gov/web/empsit/ces_cps_trends.htm.

2. Are undocumented immigrants counted in the surveys?

It is likely that both surveys include at least some undocumented immigrants. However, neither the establishment nor the household survey is designed to identify the legal status of workers. Therefore, it is not possible to determine how many are counted in either survey. The establishment survey does not collect data on the legal status of workers. The household survey does include questions which identify the foreign and native born, but it does not include questions about the legal status of the foreign born. Data on the foreign and native born are published each month in table A-7 of The Employment Situation news release.

3. Why does the establishment survey have revisions?

The establishment survey revises published estimates to improve its data series by incorporating additional information that was not available at the time of the initial publication of the estimates. The establishment survey revises its initial monthly estimates twice, in the immediately succeeding 2 months, to incorporate additional sample receipts from respondents in the survey and recalculated seasonal adjustment factors. For more information on the monthly revisions, please visit www.bls.gov/web/empsit/cestn.htm#section7.

On an annual basis, the establishment survey incorporates a benchmark revision that re-anchors estimates to nearly complete employment counts available from unemployment insurance tax records. The benchmark helps to control for sampling and modeling errors in the estimates. For more information on the annual benchmark revision, please visit www.bls.gov/web/empsit/cesbmart.htm.

4. Does the establishment survey sample include small firms?

Yes; about 40 percent of the establishment survey sample is comprised of business establishments with fewer than 20 employees. The establishment survey sample is designed to maximize the reliability of the statewide total nonfarm employment estimate; firms from all states, size classes, and industries are appropriately sampled to achieve that goal.

5. Does the establishment survey account for employment from new businesses?

Yes; monthly establishment survey estimates include an adjustment to account for the net employment change generated by business births and deaths. The adjustment comes from an econometric model that forecasts the monthly net jobs impact of business births and deaths based on the actual past values of the net impact that can be observed with a lag from the Quarterly Census of Employment and Wages. The establishment survey uses modeling rather than sampling for this purpose because the survey is not immediately able to bring new businesses into the sample. There is an unavoidable lag between the birth of a new firm and its appearance on the sampling frame and availability for selection. BLS adds new businesses to the survey twice a year.

6. Is the count of unemployed persons limited to just those people receiving unemployment insurance benefits?

No; the estimate of unemployment is based on a monthly sample survey of households. All persons who are without jobs and are actively seeking and available to work are included among the unemployed. (People on temporary layoff are included even if they do not actively seek work.) There is no requirement or question relating to unemployment insurance benefits in the monthly survey.

7. Does the official unemployment rate exclude people who want a job but are not currently looking for work?

Yes; however, there are separate estimates of persons outside the labor force who want a job, including those who are not currently looking because they believe no jobs are available (discouraged workers). In addition, alternative measures of labor underutilization (some of which include discouraged workers and other groups not officially counted as unemployed) are published each month in table A-15 of The Employment Situation news release. For more information about these alternative measures, please visit www.bls.gov/cps/lfcharacteristics.htm#altmeasures.

8. How can unusually severe weather affect employment and hours estimates?

In the establishment survey, the reference period is the pay period that includes the 12th of the month. Unusually severe weather is more likely to have an impact on average weekly hours than on employment. Average weekly hours are estimated for paid time during the pay period, including pay for holidays, sick leave, or other time off. The impact of severe weather on hours estimates typically, but not always, results in a reduction in average weekly hours. For example, some employees may be off work for part of the pay period and not receive pay for the time missed, while some workers, such as those dealing with cleanup or repair, may work extra hours.

Typically, it is not possible to precisely quantify the effect of extreme weather on payroll employment estimates. In order for severe weather conditions to reduce employment estimates, employees have to be off work without pay for the entire pay period. Employees who receive pay for any part of the pay period, even 1 hour, are counted in the payroll employment figures. For more information on how often employees are paid, please visit www.bls.gov/ces/publications/length-pay-period.htm.

In the household survey, the reference period is generally the calendar week that includes the 12th of the month. Persons who miss the entire week's work for weather-related events are counted as employed whether or not they are paid for the time off. The household survey collects data on the number of persons who had a job but were not at work due to bad weather. It also provides a measure of the number of persons who usually work full time but had reduced hours due to bad weather. Current and historical data are available on the household survey's most requested statistics page, please visit data.bls.gov/cgi-bin/surveymost?ln.

Technical Note

This news release presents statistics from two major surveys, the Current Population Survey (CPS; household survey) and the Current Employment Statistics survey (CES; establishment survey). The household survey provides information on the labor force, employment, and unemployment that appears in the "A" tables, marked HOUSEHOLD DATA. It is a sample survey of about 60,000 eligible households conducted by the U.S. Census Bureau for the U.S. Bureau of Labor Statistics (BLS).

The establishment survey provides information on employment, hours, and earnings of employees on nonfarm payrolls; the data appear in the "B" tables, marked ESTABLISHMENT DATA. BLS collects these data each month from the payroll records of a sample of nonagricultural business establishments. Each month the CES program surveys about 122,000 businesses and government agencies, representing approximately 666,000 individual worksites, in order to provide detailed industry data on employment, hours, and earnings of workers on nonfarm payrolls. The active sample includes approximately one-third of all nonfarm payroll jobs.

For both surveys, the data for a given month relate to a particular week or pay period. In the household survey, the reference period is generally the calendar week that contains the 12th day of the month. In the establishment survey, the reference period is the pay period including the 12th, which may or may not correspond directly to the calendar week.

Coverage, definitions, and differences between surveys

Household survey. The sample is selected to reflect the entire civilian noninstitutional population. Based on responses to a series of questions on work and job search activities, each person 16 years and over in a sample household is classified as employed, unemployed, or not in the labor force.

People are classified as *employed* if they did any work at all as paid employees during the reference week; worked in their own business, profession, or on their own farm; or worked without pay at least 15 hours in a family business or farm. People are also counted as employed if they were temporarily absent from their jobs because of illness, bad weather, vacation, labor-management disputes, or personal reasons.

People are classified as *unemployed* if they meet all of the following criteria: they had no employment during the reference week; they were available for work at that time; and they made specific active efforts to find employment sometime during the 4-week period ending with the reference week. Persons laid off from a job and expecting recall need not be looking for work to be counted as unemployed. The unemployment data derived from the household survey in no way depend upon the eligibility for or receipt of unemployment insurance benefits.

The *civilian labor force* is the sum of employed and unemployed persons. Those persons not classified as employed or unemployed are *not in the labor force*. The

unemployment rate is the number unemployed as a percent of the labor force. The *labor force participation rate* is the labor force as a percent of the population, and the *employment-population ratio* is the employed as a percent of the population. Additional information about the household survey can be found at www.bls.gov/cps/documentation.htm.

Establishment survey. The sample establishments are drawn from private nonfarm businesses such as factories, offices, and stores, as well as from federal, state, and local government entities. *Employees on nonfarm payrolls* are those who worked or received pay for any part of the reference pay period, including persons on paid leave. Persons are counted in each job they hold. *Hours and earnings* data are produced for the private sector for all employees and for production and nonsupervisory employees. *Production and nonsupervisory* employees are defined as production and related employees in manufacturing and mining and logging, construction workers in construction, and non-supervisory employees in private service-providing industries.

Industries are classified on the basis of an establishment's principal activity in accordance with the 2022 version of the North American Industry Classification System. Additional information about the establishment survey can be found at www.bls.gov/ces/.

Differences in employment estimates. The numerous conceptual and methodological differences between the household and establishment surveys result in important distinctions in the employment estimates derived from the surveys. Among these are:

- The household survey includes agricultural workers, self-employed workers whose businesses are unincorporated, unpaid family workers, and private household workers among the employed. These groups are excluded from the establishment survey.
- The household survey includes people on unpaid leave among the employed. The establishment survey does not.
- The household survey is limited to workers 16 years of age and older. The establishment survey is not limited by age.
- The household survey has no duplication of individuals, because individuals are counted only once, even if they hold more than one job. In the establishment survey, employees working at more than one job and thus appearing on more than one payroll are counted separately for each appearance.

Seasonal adjustment

Over the course of a year, the size of the nation's labor force and the levels of employment and unemployment undergo regularly occurring fluctuations. These events may result from seasonal changes in weather, major holidays, and the opening and closing of schools. The effect of such seasonal variation can be very large.

Because these seasonal events follow a more or less regular pattern each year, their influence on the level of a series can be tempered by adjusting for regular seasonal variation. These adjustments make nonseasonal developments, such as declines in employment or increases in the participation of women in the labor force, easier to spot. For example, in the household survey, the large number of youth entering the labor force each June is likely to obscure any other changes that have taken place relative to May, making it difficult to determine if the level of economic activity has risen or declined. Similarly, in the establishment survey, payroll employment in education declines by about 20 percent at the end of the spring term and later rises with the start of the fall term, obscuring the underlying employment trends in the industry. Because seasonal employment changes at the end and beginning of the school year can be estimated, the statistics can be adjusted to make underlying employment patterns more discernable. The seasonally adjusted figures provide a more useful tool with which to analyze changes in month-to-month economic activity.

Many seasonally adjusted series are independently adjusted in both the household and establishment surveys. However, the adjusted series for many major estimates, such as total payroll employment, employment in most major sectors, total employment, and unemployment are computed by aggregating independently adjusted component series. For example, total unemployment is derived by summing the adjusted series for four major age-sex components; this differs from the unemployment estimate that would be obtained by directly adjusting the total or by combining the duration, reasons, or more detailed age categories. Percentage distributions of unemployment by reason and duration are derived from the sum of the independently seasonally adjusted component series and will not necessarily match calculations made using the seasonally adjusted total unemployment level. Additional information about seasonal adjustment in the household survey can be found at www.bls.gov/cps/documentation.htm#sa.

For both the household and establishment surveys, a concurrent seasonal adjustment methodology is used in which new seasonal factors are calculated each month using all relevant data, up to and including the data for the current month. In the household survey, new seasonal factors are used to adjust only the current month's data. In the establishment survey, however, new seasonal factors are used each month to adjust the three most recent monthly estimates. The prior 2 months are routinely revised to incorporate additional sample reports and recalculated seasonal adjustment factors. In both surveys, 5-year revisions to historical data are made once a year.

Reliability of the estimates

Statistics based on the household and establishment surveys are subject to both sampling and nonsampling error. When a sample, rather than the entire population, is surveyed, there is a chance that the sample estimates may differ from the true population values they represent. The component of this difference that occurs because samples differ by chance is known as *sampling error*, and its variability is measured by the standard error of the estimate. There is about a 90-percent chance, or level of confidence, that an estimate based on a sample will differ by no more than 1.6 standard errors from the true population value because of sampling error. BLS analyses are generally conducted at the 90-percent level of confidence.

For example, the confidence interval for the monthly change in total nonfarm employment from the establishment survey is on the order of plus or minus 130,000. Suppose the estimate of nonfarm employment increases by 50,000 from one month to the next. The 90-percent confidence interval on the monthly change would range from -80,000 to +180,000 (50,000 +/- 130,000). These figures do not mean that the sample results are off by these magnitudes, but rather that there is about a 90-percent chance that the true over-the-month change lies within this interval. Since this range includes values of less than zero, we could not say with confidence that nonfarm employment had, in fact, increased that month. If, however, the reported nonfarm employment rise was 250,000, then all of the values within the 90-percent confidence interval would be greater than zero. In this case, it is likely (at least a 90-percent chance) that nonfarm employment had, in fact, risen that month. At an unemployment rate of around 6.0 percent, the 90-percent confidence interval for the monthly change in unemployment as measured by the household survey is about +/- 300,000, and for the monthly change in the unemployment rate it is about +/- 0.2 percentage point.

In general, estimates involving many individuals or establishments have lower standard errors (relative to the size of the estimate) than estimates which are based on a small number of observations. The precision of estimates also is improved when the data are cumulated over time, such as for quarterly and annual averages.

The household and establishment surveys are also affected by *nonsampling error*, which can occur for many reasons, including the failure to sample a segment of the population, inability to obtain information for all respondents in the sample, inability or unwillingness of respondents to provide correct information on a timely basis, mistakes made by respondents, and errors made in the collection or processing of the data.

For example, in the establishment survey, estimates for the most recent 2 months are based on incomplete returns; for this reason, these estimates are labeled preliminary in the tables. It is only after two successive revisions to a monthly estimate, when nearly all sample reports have been received, that the estimate is considered final.

Another major source of nonsampling error in the establishment survey is the inability to capture, on a timely

basis, employment generated by new firms. To correct for this systematic underestimation of employment growth, an estimation procedure with two components is used to account for business births. The first component excludes employment losses from business deaths from sample-based estimation in order to offset the missing employment gains from business births. This is incorporated into the sample-based estimation procedure by simply not reflecting sample units going out of business, but imputing to them the same employment trend as the other firms in the sample. This procedure accounts for most of the net birth/death employment.

The second component is an ARIMA time series model designed to estimate the residual net birth/death employment not accounted for by the imputation. The historical time series used to create and test the ARIMA model was derived from the unemployment insurance universe micro-level database, and reflects the actual residual net of births and deaths over the past 5 years.

The sample-based estimates from the establishment survey are adjusted once a year (on a lagged basis) to universe counts of payroll employment obtained from administrative records of the unemployment insurance program. The difference between the March sample-based employment estimates and the March universe counts is known as a benchmark revision, and serves as a rough proxy for total survey error. The new benchmarks also incorporate changes in the classification of industries. Over the past decade, absolute benchmark revisions for total nonfarm employment have averaged 0.1 percent, with a range from -0.3 percent to 0.3 percent.

Other information

If you are deaf, hard of hearing, or have a speech disability, please dial 7-1-1 to access telecommunications relay services.

HOUSEHOLD DATA

Table A-1. Employment status of the civilian population by sex and age

[Numbers in thousands]

Employment status, sex, and age	Not seasonally adjusted			Seasonally adjusted ¹					
	Mar. 2022	Feb. 2023	Mar. 2023	Mar. 2022	Nov. 2022	Dec. 2022	Jan. 2023	Feb. 2023	Mar. 2023
TOTAL									
Civilian noninstitutional population.....	263,444	266,112	266,272	263,444	264,708	264,844	265,962	266,112	266,272
Civilian labor force.....	164,274	166,178	166,783	164,301	164,527	164,966	165,832	166,251	166,731
Participation rate.....	62.4	62.4	62.6	62.4	62.2	62.3	62.4	62.5	62.6
Employed.....	158,106	159,713	160,741	158,328	158,527	159,244	160,138	160,315	160,892
Employment-population ratio.....	60.0	60.0	60.4	60.1	59.9	60.1	60.2	60.2	60.4
Unemployed.....	6,168	6,465	6,043	5,972	6,000	5,722	5,694	5,936	5,839
Unemployment rate.....	3.8	3.9	3.6	3.6	3.6	3.5	3.4	3.6	3.5
Not in labor force.....	99,170	99,934	99,489	99,144	100,181	99,878	100,130	99,861	99,541
Persons who currently want a job.....	5,502	4,987	4,646	5,752	5,528	5,176	5,314	5,103	4,925
Men, 16 years and over									
Civilian noninstitutional population.....	128,355	130,072	130,150	128,355	128,983	129,050	129,998	130,072	130,150
Civilian labor force.....	87,408	88,382	88,958	87,495	87,793	87,864	88,334	88,474	88,999
Participation rate.....	68.1	67.9	68.4	68.2	68.1	68.1	67.9	68.0	68.4
Employed.....	83,902	84,666	85,420	84,294	84,557	84,880	85,186	85,266	85,776
Employment-population ratio.....	65.4	65.1	65.6	65.7	65.6	65.8	65.5	65.6	65.9
Unemployed.....	3,506	3,717	3,538	3,201	3,236	2,984	3,147	3,208	3,223
Unemployment rate.....	4.0	4.2	4.0	3.7	3.7	3.4	3.6	3.6	3.6
Not in labor force.....	40,947	41,689	41,192	40,860	41,189	41,186	41,665	41,597	41,151
Men, 20 years and over									
Civilian noninstitutional population.....	119,726	121,346	121,415	119,726	120,301	120,360	121,283	121,346	121,415
Civilian labor force.....	84,403	85,363	85,876	84,266	84,525	84,694	85,084	85,210	85,696
Participation rate.....	70.5	70.3	70.7	70.4	70.3	70.4	70.2	70.2	70.6
Employed.....	81,201	82,048	82,654	81,389	81,698	82,033	82,324	82,407	82,816
Employment-population ratio.....	67.8	67.6	68.1	68.0	67.9	68.2	67.9	67.9	68.2
Unemployed.....	3,202	3,315	3,222	2,877	2,827	2,661	2,760	2,803	2,880
Unemployment rate.....	3.8	3.9	3.8	3.4	3.3	3.1	3.2	3.3	3.4
Not in labor force.....	35,323	35,983	35,539	35,460	35,776	35,666	36,199	36,136	35,718
Women, 16 years and over									
Civilian noninstitutional population.....	135,089	136,040	136,122	135,089	135,725	135,795	135,963	136,040	136,122
Civilian labor force.....	76,866	77,796	77,825	76,806	76,734	77,102	77,498	77,777	77,732
Participation rate.....	56.9	57.2	57.2	56.9	56.5	56.8	57.0	57.2	57.1
Employed.....	74,203	75,047	75,320	74,035	73,970	74,364	74,952	75,049	75,115
Employment-population ratio.....	54.9	55.2	55.3	54.8	54.5	54.8	55.1	55.2	55.2
Unemployed.....	2,663	2,749	2,505	2,771	2,764	2,738	2,546	2,728	2,617
Unemployment rate.....	3.5	3.5	3.2	3.6	3.6	3.6	3.3	3.5	3.4
Not in labor force.....	58,223	58,245	58,297	58,284	58,991	58,692	58,465	58,264	58,390
Women, 20 years and over									
Civilian noninstitutional population.....	126,691	127,613	127,684	126,691	127,283	127,345	127,546	127,613	127,684
Civilian labor force.....	73,946	74,823	74,860	73,736	73,532	73,930	74,379	74,606	74,612
Participation rate.....	58.4	58.6	58.6	58.2	57.8	58.1	58.3	58.5	58.4
Employed.....	71,555	72,354	72,606	71,275	71,088	71,531	72,104	72,189	72,284
Employment-population ratio.....	56.5	56.7	56.9	56.3	55.9	56.2	56.5	56.6	56.6
Unemployed.....	2,391	2,470	2,253	2,462	2,444	2,398	2,275	2,417	2,328
Unemployment rate.....	3.2	3.3	3.0	3.3	3.3	3.2	3.1	3.2	3.1
Not in labor force.....	52,745	52,790	52,825	52,955	53,750	53,416	53,167	53,007	53,072
Both sexes, 16 to 19 years									
Civilian noninstitutional population.....	17,027	17,153	17,173	17,027	17,124	17,139	17,133	17,153	17,173
Civilian labor force.....	5,926	5,992	6,048	6,298	6,469	6,343	6,368	6,435	6,423
Participation rate.....	34.8	34.9	35.2	37.0	37.8	37.0	37.2	37.5	37.4
Employed.....	5,350	5,311	5,480	5,665	5,740	5,680	5,710	5,719	5,792
Employment-population ratio.....	31.4	31.0	31.9	33.3	33.5	33.1	33.3	33.3	33.7
Unemployed.....	576	680	568	634	729	662	658	716	631
Unemployment rate.....	9.7	11.4	9.4	10.1	11.3	10.4	10.3	11.1	9.8
Not in labor force.....	11,102	11,161	11,125	10,729	10,655	10,796	10,765	10,718	10,750

¹ The population figures are not adjusted for seasonal variation; therefore, identical numbers appear in the unadjusted and seasonally adjusted columns.

NOTE: Updated population controls are introduced annually with the release of January data.

HOUSEHOLD DATA

Table A-2. Employment status of the civilian population by race, sex, and age

[Numbers in thousands]

Employment status, race, sex, and age	Not seasonally adjusted			Seasonally adjusted ¹					
	Mar. 2022	Feb. 2023	Mar. 2023	Mar. 2022	Nov. 2022	Dec. 2022	Jan. 2023	Feb. 2023	Mar. 2023
WHITE									
Civilian noninstitutional population.....	202,932	204,118	204,186	202,932	203,617	203,684	204,062	204,118	204,186
Civilian labor force.....	126,302	126,754	126,976	126,262	125,902	126,408	126,699	126,756	126,933
Participation rate.....	62.2	62.1	62.2	62.2	61.8	62.1	62.1	62.1	62.2
Employed.....	122,122	122,285	122,698	122,241	121,807	122,556	122,776	122,738	122,831
Employment-population ratio.....	60.2	59.9	60.1	60.2	59.8	60.2	60.2	60.1	60.2
Unemployed.....	4,180	4,470	4,278	4,021	4,094	3,852	3,924	4,017	4,102
Unemployment rate.....	3.3	3.5	3.4	3.2	3.3	3.0	3.1	3.2	3.2
Not in labor force.....	76,630	77,364	77,210	76,670	77,716	77,276	77,362	77,362	77,253
Men, 20 years and over									
Civilian labor force.....	66,085	66,225	66,467	65,924	65,759	66,045	66,118	66,083	66,304
Participation rate.....	70.6	70.1	70.3	70.4	70.0	70.3	70.0	69.9	70.2
Employed.....	63,808	63,842	64,180	63,901	63,767	64,189	64,210	64,125	64,287
Employment-population ratio.....	68.1	67.6	67.9	68.2	67.9	68.3	68.0	67.9	68.0
Unemployed.....	2,278	2,383	2,288	2,023	1,992	1,856	1,908	1,958	2,018
Unemployment rate.....	3.4	3.6	3.4	3.1	3.0	2.8	2.9	3.0	3.0
Women, 20 years and over									
Civilian labor force.....	55,556	55,932	55,812	55,398	55,174	55,461	55,637	55,733	55,656
Participation rate.....	57.4	57.6	57.4	57.2	56.8	57.1	57.3	57.4	57.3
Employed.....	54,041	54,309	54,203	53,825	53,562	53,918	54,093	54,142	53,994
Employment-population ratio.....	55.8	55.9	55.8	55.6	55.1	55.5	55.7	55.7	55.6
Unemployed.....	1,515	1,623	1,609	1,573	1,611	1,543	1,544	1,591	1,661
Unemployment rate.....	2.7	2.9	2.9	2.8	2.9	2.8	2.8	2.9	3.0
Both sexes, 16 to 19 years									
Civilian labor force.....	4,660	4,597	4,696	4,940	4,969	4,902	4,944	4,940	4,973
Participation rate.....	37.4	36.8	37.6	39.6	39.7	39.2	39.6	39.6	39.8
Employed.....	4,273	4,133	4,316	4,515	4,478	4,449	4,472	4,471	4,550
Employment-population ratio.....	34.3	33.1	34.5	36.2	35.8	35.5	35.8	35.8	36.4
Unemployed.....	388	463	381	424	491	453	472	469	423
Unemployment rate.....	8.3	10.1	8.1	8.6	9.9	9.2	9.5	9.5	8.5
BLACK OR AFRICAN AMERICAN									
Civilian noninstitutional population.....	34,030	34,519	34,550	34,030	34,272	34,301	34,487	34,519	34,550
Civilian labor force.....	21,026	21,770	22,062	21,125	21,365	21,418	21,697	21,893	22,152
Participation rate.....	61.8	63.1	63.9	62.1	62.3	62.4	62.9	63.4	64.1
Employed.....	19,695	20,488	20,938	19,821	20,139	20,189	20,535	20,654	21,037
Employment-population ratio.....	57.9	59.4	60.6	58.2	58.8	58.9	59.5	59.8	60.9
Unemployed.....	1,331	1,282	1,124	1,304	1,226	1,229	1,162	1,239	1,114
Unemployment rate.....	6.3	5.9	5.1	6.2	5.7	5.7	5.4	5.7	5.0
Not in labor force.....	13,003	12,749	12,488	12,905	12,907	12,883	12,790	12,626	12,399
Men, 20 years and over									
Civilian labor force.....	9,754	10,153	10,353	9,815	9,947	9,956	10,115	10,218	10,400
Participation rate.....	67.4	68.9	70.2	67.9	68.3	68.3	68.7	69.3	70.5
Employed.....	9,163	9,593	9,776	9,261	9,408	9,446	9,579	9,700	9,860
Employment-population ratio.....	63.4	65.1	66.3	64.0	64.6	64.8	65.0	65.8	66.8
Unemployed.....	590	560	577	554	539	510	535	518	539
Unemployment rate.....	6.1	5.5	5.6	5.6	5.4	5.1	5.3	5.1	5.2
Women, 20 years and over									
Civilian labor force.....	10,572	10,876	10,991	10,567	10,633	10,679	10,804	10,877	10,986
Participation rate.....	61.8	63.0	63.6	61.8	61.8	62.0	62.6	63.0	63.6
Employed.....	9,986	10,301	10,541	9,981	10,077	10,093	10,301	10,319	10,522
Employment-population ratio.....	58.4	59.7	61.0	58.4	58.6	58.6	59.7	59.8	60.9
Unemployed.....	586	575	450	586	556	586	504	558	464
Unemployment rate.....	5.5	5.3	4.1	5.5	5.2	5.5	4.7	5.1	4.2
Both sexes, 16 to 19 years									
Civilian labor force.....	701	741	718	743	785	784	778	797	766
Participation rate.....	28.3	29.5	28.5	30.1	31.4	31.4	31.0	31.7	30.4
Employed.....	546	594	621	578	654	650	655	635	655
Employment-population ratio.....	22.1	23.6	24.6	23.4	26.2	26.0	26.1	25.2	26.0
Unemployed.....	155	147	97	165	131	134	123	163	111
Unemployment rate.....	22.1	19.9	13.5	22.2	16.7	17.1	15.8	20.4	14.5

See footnotes at end of table.

HOUSEHOLD DATA

Table A-2. Employment status of the civilian population by race, sex, and age — Continued

[Numbers in thousands]

Employment status, race, sex, and age	Not seasonally adjusted			Seasonally adjusted ¹					
	Mar. 2022	Feb. 2023	Mar. 2023	Mar. 2022	Nov. 2022	Dec. 2022	Jan. 2023	Feb. 2023	Mar. 2023
ASIAN									
Civilian noninstitutional population.....	16,803	17,444	17,545	16,803	16,980	17,005	17,541	17,444	17,545
Civilian labor force.....	10,784	11,371	11,421	10,771	10,995	10,918	11,240	11,348	11,390
Participation rate.....	64.2	65.2	65.1	64.1	64.8	64.2	64.1	65.1	64.9
Employed.....	10,493	10,982	11,104	10,472	10,704	10,654	10,926	10,962	11,067
Employment-population ratio.....	62.4	63.0	63.3	62.3	63.0	62.7	62.3	62.8	63.1
Unemployed.....	291	389	317	299	291	265	313	386	323
Unemployment rate.....	2.7	3.4	2.8	2.8	2.6	2.4	2.8	3.4	2.8
Not in labor force.....	6,019	6,073	6,123	6,032	5,984	6,086	6,301	6,096	6,154

¹ The population figures are not adjusted for seasonal variation; therefore, identical numbers appear in the unadjusted and seasonally adjusted columns.

NOTE: Estimates for the above race groups will not sum to totals shown in table A-1 because data are not presented for all races. Updated population controls are introduced annually with the release of January data.

HOUSEHOLD DATA

Table A-3. Employment status of the Hispanic or Latino population by sex and age

[Numbers in thousands]

Employment status, sex, and age	Not seasonally adjusted			Seasonally adjusted ¹					
	Mar. 2022	Feb. 2023	Mar. 2023	Mar. 2022	Nov. 2022	Dec. 2022	Jan. 2023	Feb. 2023	Mar. 2023
HISPANIC OR LATINO ETHNICITY									
Civilian noninstitutional population.....	45,888	47,103	47,194	45,888	46,545	46,624	47,010	47,103	47,194
Civilian labor force.....	30,498	31,507	31,551	30,487	30,600	30,893	31,153	31,444	31,517
Participation rate.....	66.5	66.9	66.9	66.4	65.7	66.3	66.3	66.8	66.8
Employed.....	29,155	29,640	30,017	29,214	29,382	29,611	29,737	29,789	30,071
Employment-population ratio.....	63.5	62.9	63.6	63.7	63.1	63.5	63.3	63.2	63.7
Unemployed.....	1,343	1,866	1,534	1,274	1,218	1,281	1,416	1,655	1,446
Unemployment rate.....	4.4	5.9	4.9	4.2	4.0	4.1	4.5	5.3	4.6
Not in labor force.....	15,390	15,597	15,643	15,401	15,944	15,731	15,857	15,659	15,677
Men, 20 years and over									
Civilian labor force.....	16,672	16,951	17,035	16,626	16,526	16,725	16,795	16,882	16,969
Participation rate.....	80.2	79.2	79.4	80.0	78.4	79.2	78.6	78.8	79.1
Employed.....	15,938	15,912	16,260	15,978	15,925	16,047	16,073	16,036	16,293
Employment-population ratio.....	76.6	74.3	75.8	76.8	75.5	76.0	75.2	74.9	76.0
Unemployed.....	734	1,038	775	648	601	677	722	846	676
Unemployment rate.....	4.4	6.1	4.6	3.9	3.6	4.0	4.3	5.0	4.0
Women, 20 years and over									
Civilian labor force.....	12,465	13,120	13,064	12,476	12,637	12,785	13,024	13,085	13,069
Participation rate.....	59.8	61.5	61.1	59.8	59.7	60.3	61.1	61.3	61.1
Employed.....	11,928	12,465	12,462	11,950	12,179	12,307	12,447	12,460	12,482
Employment-population ratio.....	57.2	58.4	58.3	57.3	57.6	58.1	58.4	58.4	58.4
Unemployed.....	537	655	602	526	458	478	577	626	587
Unemployment rate.....	4.3	5.0	4.6	4.2	3.6	3.7	4.4	4.8	4.5
Both sexes, 16 to 19 years									
Civilian labor force.....	1,361	1,436	1,452	1,385	1,438	1,383	1,334	1,477	1,479
Participation rate.....	32.1	33.1	33.4	32.7	33.4	32.0	30.8	34.0	34.0
Employed.....	1,289	1,262	1,296	1,285	1,279	1,257	1,217	1,294	1,296
Employment-population ratio.....	30.4	29.1	29.8	30.3	29.7	29.1	28.1	29.8	29.8
Unemployed.....	72	173	157	100	159	126	116	183	183
Unemployment rate.....	5.3	12.1	10.8	7.2	11.0	9.1	8.7	12.4	12.4

¹ The population figures are not adjusted for seasonal variation; therefore, identical numbers appear in the unadjusted and seasonally adjusted columns.

NOTE: Persons whose ethnicity is identified as Hispanic or Latino may be of any race. Updated population controls are introduced annually with the release of January data.

HOUSEHOLD DATA

Table A-4. Employment status of the civilian population 25 years and over by educational attainment

[Numbers in thousands]

Educational attainment	Not seasonally adjusted			Seasonally adjusted					
	Mar. 2022	Feb. 2023	Mar. 2023	Mar. 2022	Nov. 2022	Dec. 2022	Jan. 2023	Feb. 2023	Mar. 2023
Less than a high school diploma									
Civilian labor force.....	9,030	8,850	9,138	9,099	8,901	8,885	8,814	9,165	9,203
Participation rate.....	45.3	46.7	46.2	45.6	45.6	45.6	46.0	48.3	46.6
Employed.....	8,456	8,198	8,605	8,617	8,506	8,443	8,417	8,629	8,762
Employment-population ratio.....	42.4	43.2	43.5	43.2	43.5	43.4	43.9	45.5	44.3
Unemployed.....	574	652	532	482	395	442	397	536	441
Unemployment rate.....	6.4	7.4	5.8	5.3	4.4	5.0	4.5	5.8	4.8
High school graduates, no college¹									
Civilian labor force.....	36,943	35,852	35,827	36,773	35,192	35,605	36,189	35,850	35,680
Participation rate.....	56.9	56.0	56.3	56.6	55.7	56.2	56.4	56.0	56.1
Employed.....	35,365	34,441	34,275	35,303	33,816	34,339	34,836	34,574	34,246
Employment-population ratio.....	54.5	53.8	53.8	54.4	53.5	54.2	54.3	54.0	53.8
Unemployed.....	1,578	1,411	1,553	1,469	1,377	1,266	1,353	1,276	1,433
Unemployment rate.....	4.3	3.9	4.3	4.0	3.9	3.6	3.7	3.6	4.0
Some college or associate degree									
Civilian labor force.....	35,600	35,869	35,943	35,604	35,880	35,789	36,082	35,962	35,944
Participation rate.....	63.5	63.4	63.6	63.5	62.9	62.7	63.5	63.6	63.6
Employed.....	34,468	34,594	34,852	34,499	34,748	34,735	35,046	34,796	34,877
Employment-population ratio.....	61.5	61.2	61.7	61.6	60.9	60.8	61.7	61.5	61.8
Unemployed.....	1,132	1,275	1,091	1,105	1,133	1,054	1,036	1,167	1,067
Unemployment rate.....	3.2	3.6	3.0	3.1	3.2	2.9	2.9	3.2	3.0
Bachelor's degree and higher²									
Civilian labor force.....	62,027	63,848	64,036	61,657	63,041	63,150	62,854	63,140	63,632
Participation rate.....	73.3	73.1	73.5	72.9	72.5	72.7	72.7	72.3	73.1
Employed.....	60,855	62,530	62,786	60,447	61,781	61,947	61,591	61,858	62,355
Employment-population ratio.....	71.9	71.6	72.1	71.4	71.1	71.3	71.2	70.9	71.6
Unemployed.....	1,172	1,318	1,250	1,210	1,260	1,203	1,263	1,282	1,278
Unemployment rate.....	1.9	2.1	2.0	2.0	2.0	1.9	2.0	2.0	2.0

¹ Includes persons with a high school diploma or equivalent.

² Includes persons with bachelor's, master's, professional, and doctoral degrees.

NOTE: Detail for the seasonally adjusted data shown in this table will not necessarily add to totals for those 25 years and over because of the independent seasonal adjustment of the various series. Updated population controls are introduced annually with the release of January data.

HOUSEHOLD DATA

Table A-5. Employment status of the civilian population 18 years and over by veteran status, period of service, and sex, not seasonally adjusted

[Numbers in thousands]

Employment status, veteran status, and period of service	Total		Men		Women	
	Mar. 2022	Mar. 2023	Mar. 2022	Mar. 2023	Mar. 2022	Mar. 2023
VETERANS, 18 years and over						
Civilian noninstitutional population.....	18,449	17,983	16,427	15,947	2,022	2,036
Civilian labor force.....	8,979	8,718	7,799	7,573	1,180	1,145
Participation rate.....	48.7	48.5	47.5	47.5	58.3	56.2
Employed.....	8,763	8,507	7,603	7,388	1,160	1,119
Employment-population ratio.....	47.5	47.3	46.3	46.3	57.4	55.0
Unemployed.....	216	211	196	185	20	26
Unemployment rate.....	2.4	2.4	2.5	2.4	1.7	2.2
Not in labor force.....	9,470	9,265	8,628	8,374	842	891
Gulf War-era II veterans						
Civilian noninstitutional population.....	4,761	4,970	3,864	4,065	898	905
Civilian labor force.....	3,860	4,057	3,218	3,395	642	662
Participation rate.....	81.1	81.6	83.3	83.5	71.6	73.2
Employed.....	3,746	3,944	3,115	3,299	631	645
Employment-population ratio.....	78.7	79.4	80.6	81.1	70.3	71.3
Unemployed.....	114	113	103	96	12	17
Unemployment rate.....	3.0	2.8	3.2	2.8	1.8	2.6
Not in labor force.....	901	912	645	670	255	242
Gulf War-era I veterans						
Civilian noninstitutional population.....	3,332	2,980	2,870	2,527	461	453
Civilian labor force.....	2,493	2,131	2,158	1,826	335	305
Participation rate.....	74.8	71.5	75.2	72.3	72.6	67.3
Employed.....	2,460	2,085	2,127	1,780	332	305
Employment-population ratio.....	73.8	70.0	74.1	70.4	72.0	67.3
Unemployed.....	34	46	31	46	3	0
Unemployment rate.....	1.4	2.2	1.4	2.5	0.8	0.0
Not in labor force.....	839	849	712	701	126	148
World War II, Korean War, and Vietnam-era veterans						
Civilian noninstitutional population.....	6,322	6,055	6,070	5,798	252	257
Civilian labor force.....	945	806	913	781	32	25
Participation rate.....	15.0	13.3	15.0	13.5	12.9	9.7
Employed.....	911	781	884	761	27	20
Employment-population ratio.....	14.4	12.9	14.6	13.1	10.6	7.9
Unemployed.....	34	25	28	20	6	4
Unemployment rate.....	3.6	3.1	3.1	2.6	-	-
Not in labor force.....	5,377	5,249	5,157	5,017	220	232
Veterans of other service periods						
Civilian noninstitutional population.....	4,034	3,978	3,623	3,557	411	421
Civilian labor force.....	1,680	1,723	1,510	1,571	170	152
Participation rate.....	41.7	43.3	41.7	44.2	41.4	36.1
Employed.....	1,646	1,697	1,476	1,548	170	148
Employment-population ratio.....	40.8	42.6	40.7	43.5	41.4	35.2
Unemployed.....	35	27	35	23	0	4
Unemployment rate.....	2.1	1.5	2.3	1.5	0.0	2.5
Not in labor force.....	2,354	2,255	2,113	1,986	241	269
NONVETERANS, 18 years and over						
Civilian noninstitutional population.....	235,932	239,167	107,359	109,561	128,573	129,606
Civilian labor force.....	153,017	155,858	78,515	80,266	74,501	75,592
Participation rate.....	64.9	65.2	73.1	73.3	57.9	58.3
Employed.....	147,263	150,224	75,305	77,021	71,959	73,203
Employment-population ratio.....	62.4	62.8	70.1	70.3	56.0	56.5
Unemployed.....	5,753	5,634	3,211	3,246	2,543	2,389
Unemployment rate.....	3.8	3.6	4.1	4.0	3.4	3.2
Not in labor force.....	82,915	83,309	28,844	29,295	54,072	54,014

NOTE: Veterans served on active duty in the U.S. Armed Forces and were not on active duty at the time of the survey. Nonveterans never served on active duty in the U.S. Armed Forces. Veterans could have served anywhere in the world during these periods of service: Gulf War era II (September 2001-present), Gulf War era I (August 1990-August 2001), Vietnam era (August 1964-April 1975), Korean War (July 1950-January 1955), World War II (December 1941-December 1946), and other service periods (all other time periods). Veterans who served in more than one wartime period are classified only in the most recent one. Veterans who served during one of the selected wartime periods and another period are classified only in the wartime period. Dash indicates no data or data that do not meet publication criteria (values not shown where base is less than 75,000).

HOUSEHOLD DATA

Table A-6. Employment status of the civilian population by sex, age, and disability status, not seasonally adjusted

[Numbers in thousands]

Employment status, sex, and age	Persons with a disability		Persons with no disability	
	Mar. 2022	Mar. 2023	Mar. 2022	Mar. 2023
TOTAL, 16 years and over				
Civilian noninstitutional population.....	32,616	33,062	230,828	233,210
Civilian labor force.....	7,550	7,904	156,724	158,879
Participation rate.....	23.1	23.9	67.9	68.1
Employed.....	6,882	7,256	151,224	153,484
Employment-population ratio.....	21.1	21.9	65.5	65.8
Unemployed.....	668	648	5,501	5,395
Unemployment rate.....	8.8	8.2	3.5	3.4
Not in labor force.....	25,066	25,158	74,104	74,331
Men, 16 to 64 years				
Civilian labor force.....	3,202	3,272	78,110	79,656
Participation rate.....	38.8	41.6	82.6	82.8
Employed.....	2,889	2,986	75,114	76,591
Employment-population ratio.....	35.0	38.0	79.4	79.6
Unemployed.....	313	286	2,996	3,065
Unemployment rate.....	9.8	8.7	3.8	3.8
Not in labor force.....	5,050	4,588	16,444	16,531
Women, 16 to 64 years				
Civilian labor force.....	3,107	3,315	69,120	69,455
Participation rate.....	36.7	38.9	71.9	72.3
Employed.....	2,804	3,011	66,884	67,364
Employment-population ratio.....	33.2	35.3	69.6	70.2
Unemployed.....	303	304	2,236	2,091
Unemployment rate.....	9.7	9.2	3.2	3.0
Not in labor force.....	5,351	5,217	26,947	26,549
Both sexes, 65 years and over				
Civilian labor force.....	1,242	1,318	9,494	9,767
Participation rate.....	7.8	7.9	23.6	23.8
Employed.....	1,190	1,260	9,226	9,529
Employment-population ratio.....	7.5	7.6	22.9	23.2
Unemployed.....	52	58	268	238
Unemployment rate.....	4.2	4.4	2.8	2.4
Not in labor force.....	14,665	15,353	30,713	31,251

NOTE: A person with a disability has at least one of the following conditions: is deaf or has serious difficulty hearing; is blind or has serious difficulty seeing even when wearing glasses; has serious difficulty concentrating, remembering, or making decisions because of a physical, mental, or emotional condition; has serious difficulty walking or climbing stairs; has difficulty dressing or bathing; or has difficulty doing errands alone such as visiting a doctor's office or shopping because of a physical, mental, or emotional condition. Updated population controls are introduced annually with the release of January data.

HOUSEHOLD DATA

Table A-7. Employment status of the civilian population by nativity and sex, not seasonally adjusted

[Numbers in thousands]

Employment status and nativity	Total		Men		Women	
	Mar. 2022	Mar. 2023	Mar. 2022	Mar. 2023	Mar. 2022	Mar. 2023
Foreign born, 16 years and over						
Civilian noninstitutional population.....	44,456	46,445	21,475	22,786	22,982	23,659
Civilian labor force.....	29,159	30,845	16,553	17,678	12,606	13,167
Participation rate.....	65.6	66.4	77.1	77.6	54.9	55.7
Employed.....	28,172	29,848	16,001	17,089	12,172	12,759
Employment-population ratio.....	63.4	64.3	74.5	75.0	53.0	53.9
Unemployed.....	986	997	552	589	435	408
Unemployment rate.....	3.4	3.2	3.3	3.3	3.4	3.1
Not in labor force.....	15,297	15,600	4,922	5,108	10,376	10,492
Native born, 16 years and over						
Civilian noninstitutional population.....	218,988	219,827	106,880	107,364	112,108	112,463
Civilian labor force.....	135,115	135,938	70,855	71,280	64,260	64,658
Participation rate.....	61.7	61.8	66.3	66.4	57.3	57.5
Employed.....	129,933	130,893	67,901	68,331	62,032	62,562
Employment-population ratio.....	59.3	59.5	63.5	63.6	55.3	55.6
Unemployed.....	5,182	5,045	2,954	2,949	2,228	2,096
Unemployment rate.....	3.8	3.7	4.2	4.1	3.5	3.2
Not in labor force.....	83,873	83,888	36,025	36,084	47,847	47,805

NOTE: The foreign born are those residing in the United States who were not U.S. citizens at birth. That is, they were born outside the United States or one of its outlying areas such as Puerto Rico or Guam, to parents neither of whom was a U.S. citizen. The native born are persons who were born in the United States or one of its outlying areas such as Puerto Rico or Guam or who were born abroad of at least one parent who was a U.S. citizen. Updated population controls are introduced annually with the release of January data.

HOUSEHOLD DATA

Table A-8. Employed persons by class of worker and part-time status

[In thousands]

Category	Not seasonally adjusted			Seasonally adjusted					
	Mar. 2022	Feb. 2023	Mar. 2023	Mar. 2022	Nov. 2022	Dec. 2022	Jan. 2023	Feb. 2023	Mar. 2023
CLASS OF WORKER									
Agriculture and related industries.....	2,256	2,251	2,106	2,363	2,228	2,311	2,245	2,346	2,226
Wage and salary workers ¹	1,490	1,456	1,439	1,562	1,492	1,496	1,485	1,521	1,509
Self-employed workers, unincorporated.....	737	755	639	757	715	791	720	781	666
Unpaid family workers.....	29	40	28	-	-	-	-	-	-
Nonagricultural industries.....	155,849	157,461	158,634	155,670	156,344	156,818	157,645	157,743	158,318
Wage and salary workers ¹	146,612	148,238	149,499	146,726	147,381	147,886	148,822	148,723	149,479
Government.....	21,687	21,951	21,919	21,231	21,084	21,683	21,548	21,501	21,467
Private industries.....	124,924	126,287	127,580	125,240	126,468	126,169	126,981	126,967	127,750
Private households.....	575	592	561	-	-	-	-	-	-
Other industries.....	124,349	125,696	127,019	124,559	125,819	125,538	126,248	126,261	127,055
Self-employed workers, unincorporated.....	9,165	9,173	9,087	9,247	8,970	9,036	9,217	9,338	9,173
Unpaid family workers.....	73	50	48	-	-	-	-	-	-
PERSONS AT WORK PART TIME²									
All industries									
Part time for economic reasons ³	4,266	4,285	4,205	4,168	3,688	3,878	4,050	4,067	4,102
Slack work or business conditions.....	2,921	3,079	2,929	2,883	2,546	2,648	2,685	2,840	2,873
Could only find part-time work.....	1,116	868	942	1,045	826	911	999	859	882
Part time for noneconomic reasons ⁴	21,356	22,494	21,822	20,890	21,226	21,628	22,083	21,856	21,433
Nonagricultural industries									
Part time for economic reasons ³	4,211	4,146	4,115	4,140	3,623	3,810	3,959	3,964	4,037
Slack work or business conditions.....	2,879	2,975	2,873	2,846	2,497	2,611	2,646	2,750	2,822
Could only find part-time work.....	1,114	850	935	1,040	819	892	988	842	872
Part time for noneconomic reasons ⁴	20,997	22,074	21,472	20,519	20,844	21,211	21,674	21,453	21,069

¹ Includes self-employed workers whose businesses are incorporated.

² Refers to those who worked 1 to 34 hours during the survey reference week and excludes employed persons who were absent from their jobs for the entire week.

³ Refers to those who worked 1 to 34 hours during the reference week for an economic reason such as slack work or unfavorable business conditions, inability to find full-time work, or seasonal declines in demand.

⁴ Refers to persons who usually work part time for noneconomic reasons such as childcare problems, family or personal obligations, school or training, retirement or Social Security limits on earnings, and other reasons. This excludes persons who usually work full time but worked only 1 to 34 hours during the reference week for reasons such as vacations, holidays, illness, and bad weather.

- Data not available.

NOTE: Detail for the seasonally adjusted data shown in this table will not necessarily add to totals because of the independent seasonal adjustment of the various series. Updated population controls are introduced annually with the release of January data.

HOUSEHOLD DATA

Table A-9. Selected employment indicators

[Numbers in thousands]

Characteristic	Not seasonally adjusted			Seasonally adjusted					
	Mar. 2022	Feb. 2023	Mar. 2023	Mar. 2022	Nov. 2022	Dec. 2022	Jan. 2023	Feb. 2023	Mar. 2023
AGE AND SEX									
Total, 16 years and over.....	158,106	159,713	160,741	158,328	158,527	159,244	160,138	160,315	160,892
16 to 19 years.....	5,350	5,311	5,480	5,665	5,740	5,680	5,710	5,719	5,792
16 to 17 years.....	2,080	1,992	2,010	2,297	2,241	2,371	2,265	2,200	2,227
18 to 19 years.....	3,270	3,319	3,470	3,395	3,500	3,312	3,462	3,534	3,589
20 years and over.....	152,756	154,401	155,260	152,664	152,787	153,564	154,428	154,597	155,100
20 to 24 years.....	13,611	14,638	14,742	13,775	13,759	13,834	14,705	14,831	14,896
25 years and over.....	139,145	139,763	140,518	139,055	138,845	139,477	139,834	139,939	140,372
25 to 54 years.....	101,788	102,681	103,200	101,784	101,400	101,848	102,366	102,838	103,121
25 to 34 years.....	35,358	35,751	35,798	35,370	35,073	35,066	35,594	35,799	35,780
35 to 44 years.....	34,672	35,179	35,519	34,687	34,777	34,983	35,010	35,243	35,492
45 to 54 years.....	31,758	31,751	31,883	31,727	31,550	31,799	31,762	31,796	31,849
55 years and over.....	37,357	37,082	37,318	37,271	37,446	37,630	37,468	37,100	37,250
Men, 16 years and over.....	83,902	84,666	85,420	84,294	84,557	84,880	85,186	85,266	85,776
16 to 19 years.....	2,701	2,618	2,766	2,905	2,859	2,847	2,862	2,859	2,961
16 to 17 years.....	995	912	1,012	1,123	1,059	1,109	1,039	1,020	1,134
18 to 19 years.....	1,707	1,706	1,754	1,802	1,809	1,748	1,838	1,851	1,850
20 years and over.....	81,201	82,048	82,654	81,389	81,698	82,033	82,324	82,407	82,816
20 to 24 years.....	6,847	7,355	7,585	6,976	7,071	7,080	7,354	7,484	7,687
25 years and over.....	74,354	74,693	75,069	74,573	74,451	74,767	75,036	75,070	75,249
25 to 54 years.....	54,113	54,765	55,095	54,308	54,119	54,370	54,708	55,033	55,232
25 to 34 years.....	18,719	19,087	19,110	18,777	18,548	18,629	18,916	19,167	19,140
35 to 44 years.....	18,608	18,859	19,056	18,694	18,761	18,798	18,896	18,965	19,115
45 to 54 years.....	16,786	16,819	16,930	16,837	16,810	16,943	16,896	16,901	16,977
55 years and over.....	20,240	19,928	19,974	20,265	20,332	20,396	20,328	20,037	20,017
Women, 16 years and over.....	74,203	75,047	75,320	74,035	73,970	74,364	74,952	75,049	75,115
16 to 19 years.....	2,649	2,693	2,714	2,760	2,881	2,833	2,848	2,860	2,831
16 to 17 years.....	1,085	1,080	998	1,174	1,182	1,262	1,226	1,179	1,093
18 to 19 years.....	1,564	1,614	1,716	1,593	1,691	1,564	1,624	1,683	1,738
20 years and over.....	71,555	72,354	72,606	71,275	71,088	71,531	72,104	72,189	72,284
20 to 24 years.....	6,764	7,283	7,158	6,799	6,688	6,755	7,351	7,347	7,209
25 years and over.....	64,791	65,070	65,448	64,482	64,394	64,711	64,798	64,868	65,123
25 to 54 years.....	47,675	47,916	48,105	47,476	47,281	47,477	47,658	47,805	47,889
25 to 34 years.....	16,639	16,664	16,688	16,593	16,525	16,436	16,678	16,633	16,640
35 to 44 years.....	16,064	16,320	16,463	15,993	16,016	16,185	16,114	16,278	16,377
45 to 54 years.....	14,972	14,932	14,953	14,890	14,740	14,857	14,866	14,895	14,872
55 years and over.....	17,116	17,154	17,344	17,006	17,113	17,233	17,140	17,063	17,234
MARITAL STATUS									
Married men, spouse present ¹	45,412	46,414	46,462	45,303	45,988	46,209	46,119	46,387	46,341
Married women, spouse present ¹	36,391	37,152	37,081	36,086	36,322	36,472	36,490	36,883	36,759
Women who maintain families ²	10,182	9,696	9,748	-	-	-	-	-	-
FULL- OR PART-TIME STATUS									
Full-time workers ³	131,663	132,173	133,453	132,587	132,300	132,299	132,577	133,184	134,339
Part-time workers ⁴	26,443	27,540	27,288	25,908	26,115	26,794	27,400	27,089	26,747
MULTIPLE JOBHOLDERS									
Total multiple jobholders.....	7,496	8,041	8,137	7,362	7,676	8,046	8,001	7,904	7,979
Percent of total employed.....	4.7	5.0	5.1	4.7	4.8	5.1	5.0	4.9	5.0
SELF-EMPLOYMENT									
Self-employed workers, incorporated.....	6,322	6,435	6,285	-	-	-	-	-	-
Self-employed workers, unincorporated.....	9,902	9,928	9,726	10,004	9,686	9,827	9,937	10,119	9,839

¹ Beginning with data for January 2020, refers to persons in both opposite-sex and same-sex married couples. Prior to January 2020, referred to persons in opposite-sex married couples only.

² Beginning with data for January 2020, refers to female householders residing with one or more family members, but not a spouse of either sex. Prior to January 2020, referred to female householders residing with one or more family members, but not an opposite-sex spouse.

³ Employed full-time workers are persons who usually work 35 hours or more per week.

⁴ Employed part-time workers are persons who usually work less than 35 hours per week.

- Data not available.

NOTE: Detail for the seasonally adjusted data shown in this table will not necessarily add to totals because of the independent seasonal adjustment of the various series. Updated population controls are introduced annually with the release of January data.

HOUSEHOLD DATA

Table A-10. Selected unemployment indicators, seasonally adjusted

Characteristic	Number of unemployed persons (in thousands)			Unemployment rates					
	Mar. 2022	Feb. 2023	Mar. 2023	Mar. 2022	Nov. 2022	Dec. 2022	Jan. 2023	Feb. 2023	Mar. 2023
AGE AND SEX									
Total, 16 years and over.....	5,972	5,936	5,839	3.6	3.6	3.5	3.4	3.6	3.5
16 to 19 years.....	634	716	631	10.1	11.3	10.4	10.3	11.1	9.8
16 to 17 years.....	225	216	224	8.9	11.5	8.4	10.9	9.0	9.1
18 to 19 years.....	417	488	411	10.9	11.3	12.2	10.0	12.1	10.3
20 years and over.....	5,339	5,219	5,208	3.4	3.3	3.2	3.2	3.3	3.2
20 to 24 years.....	1,107	1,103	1,034	7.4	6.8	7.3	7.1	6.9	6.5
25 years and over.....	4,163	4,235	4,126	2.9	3.0	2.8	2.8	2.9	2.9
25 to 54 years.....	3,160	3,242	3,109	3.0	3.2	2.9	3.0	3.1	2.9
25 to 34 years.....	1,447	1,447	1,397	3.9	4.1	3.8	3.9	3.9	3.8
35 to 44 years.....	989	936	927	2.8	2.6	2.4	2.6	2.6	2.5
45 to 54 years.....	723	858	785	2.2	2.7	2.3	2.3	2.6	2.4
55 years and over.....	1,004	957	1,009	2.6	2.5	2.7	2.3	2.5	2.6
Men, 16 years and over.....	3,201	3,208	3,223	3.7	3.7	3.4	3.6	3.6	3.6
16 to 19 years.....	325	405	342	10.1	12.5	10.2	11.9	12.4	10.4
16 to 17 years.....	109	131	119	8.8	15.6	9.3	15.0	11.4	9.5
18 to 19 years.....	216	275	220	10.7	10.9	11.3	10.1	12.9	10.6
20 years and over.....	2,877	2,803	2,880	3.4	3.3	3.1	3.2	3.3	3.4
20 to 24 years.....	647	646	568	8.5	7.7	7.3	7.8	7.9	6.9
25 years and over.....	2,189	2,251	2,289	2.9	2.9	2.8	2.9	2.9	3.0
25 to 54 years.....	1,642	1,738	1,709	2.9	3.0	2.8	3.1	3.1	3.0
25 to 34 years.....	775	773	807	4.0	4.1	3.9	4.3	3.9	4.0
35 to 44 years.....	538	532	543	2.8	2.4	2.3	2.5	2.7	2.8
45 to 54 years.....	330	434	360	1.9	2.6	2.1	2.2	2.5	2.1
55 years and over.....	546	512	580	2.6	2.6	2.7	2.4	2.5	2.8
Women, 16 years and over.....	2,771	2,728	2,617	3.6	3.6	3.6	3.3	3.5	3.4
16 to 19 years.....	309	311	289	10.1	10.0	10.7	8.7	9.8	9.3
16 to 17 years.....	116	86	105	9.0	7.4	7.6	7.1	6.8	8.7
18 to 19 years.....	201	213	190	11.2	11.7	13.2	9.8	11.2	9.9
20 years and over.....	2,462	2,417	2,328	3.3	3.3	3.2	3.1	3.2	3.1
20 to 24 years.....	460	457	466	6.3	5.9	7.3	6.3	5.9	6.1
25 years and over.....	1,974	1,984	1,836	3.0	3.0	2.8	2.7	3.0	2.7
25 to 54 years.....	1,517	1,503	1,400	3.1	3.3	3.0	2.9	3.0	2.8
25 to 34 years.....	673	674	591	3.9	4.1	3.7	3.5	3.9	3.4
35 to 44 years.....	451	405	385	2.7	2.9	2.5	2.7	2.4	2.3
45 to 54 years.....	394	425	425	2.6	2.8	2.5	2.4	2.8	2.8
55 years and over.....	455	482	432	2.6	2.3	2.6	2.2	2.7	2.4
MARITAL STATUS									
Married men, spouse present ¹	796	885	884	1.7	2.0	1.8	1.8	1.9	1.9
Married women, spouse present ¹	785	766	735	2.1	2.0	2.1	1.9	2.0	2.0
Women who maintain families ²	514	514	471	4.8	4.9	3.6	3.8	5.0	4.6
FULL- OR PART-TIME STATUS									
Full-time workers ³	4,790	4,863	4,725	3.5	3.5	3.4	3.4	3.5	3.4
Part-time workers ⁴	1,141	1,117	1,083	4.2	4.4	3.9	3.8	4.0	3.9

¹ Beginning with data for January 2020, refers to persons in both opposite-sex and same-sex married couples. Prior to January 2020, referred to persons in opposite-sex married couples only.

² Data are not seasonally adjusted. Beginning with data for January 2020, refers to female householders residing with one or more family members, but not a spouse of either sex. Prior to January 2020, referred to female householders residing with one or more family members, but not an opposite-sex spouse.

³ Full-time workers are unemployed persons who have expressed a desire to work full time (35 hours or more per week) or are on layoff from full-time jobs.

⁴ Part-time workers are unemployed persons who have expressed a desire to work part time (less than 35 hours per week) or are on layoff from part-time jobs.

NOTE: Detail for the seasonally adjusted data shown in this table will not necessarily add to totals because of the independent seasonal adjustment of the various series. Updated population controls are introduced annually with the release of January data.

HOUSEHOLD DATA

Table A-11. Unemployed persons by reason for unemployment

[Numbers in thousands]

Reason	Not seasonally adjusted			Seasonally adjusted					
	Mar. 2022	Feb. 2023	Mar. 2023	Mar. 2022	Nov. 2022	Dec. 2022	Jan. 2023	Feb. 2023	Mar. 2023
NUMBER OF UNEMPLOYED									
Job losers and persons who completed temporary jobs.....	2,999	3,249	3,159	2,840	2,761	2,629	2,529	2,752	2,949
On temporary layoff.....	891	1,117	961	784	806	814	734	816	833
Not on temporary layoff.....	2,108	2,132	2,198	2,057	1,956	1,815	1,795	1,935	2,117
Permanent job losers.....	1,425	1,482	1,602	1,405	1,351	1,339	1,257	1,380	1,552
Persons who completed temporary jobs....	683	650	596	652	605	476	538	555	564
Job leavers.....	774	892	828	789	829	825	884	891	845
Reentrants.....	2,026	1,862	1,670	1,992	1,798	1,767	1,817	1,847	1,665
New entrants.....	370	462	385	472	558	497	531	515	492
PERCENT DISTRIBUTION									
Job losers and persons who completed temporary jobs.....	48.6	50.3	52.3	46.6	46.4	46.0	43.9	45.8	49.6
On temporary layoff.....	14.4	17.3	15.9	12.9	13.5	14.2	12.7	13.6	14.0
Not on temporary layoff.....	34.2	33.0	36.4	33.8	32.9	31.7	31.2	32.2	35.6
Job leavers.....	12.5	13.8	13.7	12.9	13.9	14.4	15.3	14.8	14.2
Reentrants.....	32.8	28.8	27.6	32.7	30.2	30.9	31.5	30.8	28.0
New entrants.....	6.0	7.1	6.4	7.7	9.4	8.7	9.2	8.6	8.3
UNEMPLOYED AS A PERCENT OF THE CIVILIAN LABOR FORCE									
Job losers and persons who completed temporary jobs.....	1.8	2.0	1.9	1.7	1.7	1.6	1.5	1.7	1.8
Job leavers.....	0.5	0.5	0.5	0.5	0.5	0.5	0.5	0.5	0.5
Reentrants.....	1.2	1.1	1.0	1.2	1.1	1.1	1.1	1.1	1.0
New entrants.....	0.2	0.3	0.2	0.3	0.3	0.3	0.3	0.3	0.3

NOTE: Detail for the seasonally adjusted data shown in this table will not necessarily add to total unemployed in table A-1 because of the independent seasonal adjustment of the various series. Updated population controls are introduced annually with the release of January data.

HOUSEHOLD DATA

Table A-12. Unemployed persons by duration of unemployment

[Numbers in thousands]

Duration	Not seasonally adjusted			Seasonally adjusted					
	Mar. 2022	Feb. 2023	Mar. 2023	Mar. 2022	Nov. 2022	Dec. 2022	Jan. 2023	Feb. 2023	Mar. 2023
NUMBER OF UNEMPLOYED									
Less than 5 weeks.....	2,003	2,130	1,978	2,303	2,244	2,233	1,946	2,289	2,272
5 to 14 weeks.....	1,850	2,247	1,891	1,688	1,694	1,639	1,785	1,845	1,733
15 weeks and over.....	2,315	2,089	2,173	1,981	2,036	1,895	2,001	1,862	1,838
15 to 26 weeks.....	830	957	1,007	552	821	826	890	805	734
27 weeks and over.....	1,486	1,131	1,167	1,429	1,215	1,069	1,111	1,057	1,104
Average (mean) duration, in weeks.....	24.9	19.1	20.1	24.1	21.4	19.5	20.4	19.3	19.5
Median duration, in weeks.....	10.0	8.9	9.6	8.3	8.8	8.9	9.1	8.3	8.1
PERCENT DISTRIBUTION									
Less than 5 weeks.....	32.5	32.9	32.7	38.6	37.6	38.7	33.9	38.2	38.9
5 to 14 weeks.....	30.0	34.7	31.3	28.3	28.4	28.4	31.1	30.8	29.7
15 weeks and over.....	37.5	32.3	36.0	33.2	34.1	32.9	34.9	31.1	31.5
15 to 26 weeks.....	13.4	14.8	16.7	9.2	13.7	14.3	15.5	13.4	12.6
27 weeks and over.....	24.1	17.5	19.3	23.9	20.3	18.5	19.4	17.6	18.9

NOTE: Detail for the seasonally adjusted data shown in this table will not necessarily add to total unemployed in table A-1 because of the independent seasonal adjustment of the various series. Updated population controls are introduced annually with the release of January data.

HOUSEHOLD DATA

Table A-13. Employed and unemployed persons by occupation, not seasonally adjusted

[Numbers in thousands]

Occupation	Employed		Unemployed		Unemployment rates	
	Mar. 2022	Mar. 2023	Mar. 2022	Mar. 2023	Mar. 2022	Mar. 2023
Total, 16 years and over ¹	158,106	160,741	6,168	6,043	3.8	3.6
Management, professional, and related occupations.....	67,823	70,651	1,053	1,368	1.5	1.9
Management, business, and financial operations occupations.....	28,828	30,285	431	647	1.5	2.1
Professional and related occupations.....	38,995	40,366	622	721	1.6	1.8
Service occupations.....	25,376	25,600	1,422	1,242	5.3	4.6
Sales and office occupations.....	30,920	30,361	1,313	1,138	4.1	3.6
Sales and related occupations.....	14,489	14,447	656	552	4.3	3.7
Office and administrative support occupations.....	16,431	15,913	657	586	3.8	3.6
Natural resources, construction, and maintenance occupations.....	14,163	14,003	794	808	5.3	5.5
Farming, fishing, and forestry occupations.....	945	797	86	70	8.4	8.1
Construction and extraction occupations.....	8,318	8,415	623	601	7.0	6.7
Installation, maintenance, and repair occupations.....	4,900	4,792	84	137	1.7	2.8
Production, transportation, and material moving occupations.....	19,824	20,125	1,196	1,101	5.7	5.2
Production occupations.....	8,111	8,405	401	384	4.7	4.4
Transportation and material moving occupations.....	11,713	11,721	795	718	6.4	5.8

¹ Persons with no previous work experience and persons whose last job was in the U.S. Armed Forces are included in the unemployed total.

NOTE: Updated population controls are introduced annually with the release of January data. Effective with January 2020 data, occupations reflect the introduction of the 2018 Census occupational classification system into the Current Population Survey, or household survey. This classification system is derived from the 2018 Standard Occupational Classification (SOC). No historical data have been revised. Data for 2020 are not strictly comparable with earlier years.

HOUSEHOLD DATA

Table A-14. Unemployed persons by industry and class of worker, not seasonally adjusted

Industry and class of worker	Number of unemployed persons (in thousands)		Unemployment rates	
	Mar. 2022	Mar. 2023	Mar. 2022	Mar. 2023
Total, 16 years and over ¹	6,168	6,043	3.8	3.6
Nonagricultural private wage and salary workers.....	5,035	4,842	3.9	3.7
Mining, quarrying, and oil and gas extraction.....	14	36	2.6	6.5
Construction.....	598	598	6.0	5.6
Manufacturing.....	485	459	3.1	2.9
Durable goods.....	343	257	3.5	2.5
Nondurable goods.....	142	202	2.5	3.6
Wholesale and retail trade.....	881	846	4.6	4.4
Transportation and utilities.....	433	390	5.1	4.6
Information.....	58	84	2.3	3.1
Financial activities.....	211	189	2.0	1.8
Professional and business services.....	756	744	4.0	3.9
Education and health services.....	628	604	2.5	2.4
Leisure and hospitality.....	771	684	5.9	5.0
Other services.....	200	208	3.2	3.3
Agriculture and related private wage and salary workers.....	107	108	7.0	7.4
Government workers.....	324	372	1.5	1.7
Self-employed workers, unincorporated, and unpaid family workers.....	331	334	3.2	3.3

¹ Persons with no previous work experience and persons whose last job was in the U.S. Armed Forces are included in the unemployed total.

NOTE: Updated population controls are introduced annually with the release of January data. Effective with January 2020 data, industries reflect the introduction of the 2017 Census industry classification system into the Current Population Survey. This industry classification system is derived from the 2017 North American Industry Classification System (NAICS). No historical data have been revised.

HOUSEHOLD DATA

Table A-15. Alternative measures of labor underutilization

[Percent]

Measure	Not seasonally adjusted			Seasonally adjusted					
	Mar. 2022	Feb. 2023	Mar. 2023	Mar. 2022	Nov. 2022	Dec. 2022	Jan. 2023	Feb. 2023	Mar. 2023
U-1 Persons unemployed 15 weeks or longer, as a percent of the civilian labor force.....	1.4	1.3	1.3	1.2	1.2	1.1	1.2	1.1	1.1
U-2 Job losers and persons who completed temporary jobs, as a percent of the civilian labor force.....	1.8	2.0	1.9	1.7	1.7	1.6	1.5	1.7	1.8
U-3 Total unemployed, as a percent of the civilian labor force (official unemployment rate).....	3.8	3.9	3.6	3.6	3.6	3.5	3.4	3.6	3.5
U-4 Total unemployed plus discouraged workers, as a percent of the civilian labor force plus discouraged workers.....	3.9	4.1	3.8	3.9	3.9	3.7	3.6	3.8	3.7
U-5 Total unemployed, plus discouraged workers, plus all other persons marginally attached to the labor force, as a percent of the civilian labor force plus all persons marginally attached to the labor force.....	4.5	4.7	4.3	4.4	4.5	4.2	4.2	4.4	4.2
U-6 Total unemployed, plus all persons marginally attached to the labor force, plus total employed part time for economic reasons, as a percent of the civilian labor force plus all persons marginally attached to the labor force.....	7.1	7.3	6.8	6.9	6.7	6.5	6.6	6.8	6.7

NOTE: Persons marginally attached to the labor force are those who currently are neither working nor looking for work but indicate that they want and are available for a job and have looked for work sometime in the past 12 months. Discouraged workers, a subset of the marginally attached, have given a job-market related reason for not currently looking for work. Persons employed part time for economic reasons are those who want and are available for full-time work but have had to settle for a part-time schedule. Updated population controls are introduced annually with the release of January data.

HOUSEHOLD DATA

Table A-16. Persons not in the labor force and multiple jobholders by sex, not seasonally adjusted

[Numbers in thousands]

Category	Total		Men		Women	
	Mar. 2022	Mar. 2023	Mar. 2022	Mar. 2023	Mar. 2022	Mar. 2023
NOT IN THE LABOR FORCE						
Total not in the labor force.....	99,170	99,489	40,947	41,192	58,223	58,297
Persons who currently want a job.....	5,502	4,646	2,571	2,314	2,931	2,332
Marginally attached to the labor force ¹	1,281	1,190	649	638	632	552
Discouraged workers ²	330	303	176	202	154	100
Other persons marginally attached to the labor force ³ ..	951	887	473	436	479	452
MULTIPLE JOBHOLDERS						
Total multiple jobholders ⁴	7,496	8,137	3,686	4,031	3,810	4,106
Percent of total employed.....	4.7	5.1	4.4	4.7	5.1	5.5
Primary job full time, secondary job part time.....	4,231	4,649	2,248	2,511	1,983	2,138
Primary and secondary jobs both part time.....	1,818	1,976	639	717	1,179	1,259
Primary and secondary jobs both full time.....	425	395	288	230	137	166
Hours vary on primary or secondary job.....	968	1,034	485	527	483	507

¹ Data refer to persons who want a job, have searched for work during the prior 12 months, and were available to take a job during the reference week, but had not looked for work in the past 4 weeks.

² Includes those who did not actively look for work in the prior 4 weeks for reasons such as thinks no work available, could not find work, lacks schooling or training, employer thinks too young or old, and other types of discrimination.

³ Includes those who did not actively look for work in the prior 4 weeks for such reasons as school or family responsibilities, ill health, and transportation problems, as well as a number for whom reason for nonparticipation was not determined.

⁴ Includes a small number of persons who work part time on their primary job and full time on their secondary job(s), not shown separately.

NOTE: Updated population controls are introduced annually with the release of January data.

ESTABLISHMENT DATA

Table B-1. Employees on nonfarm payrolls by industry sector and selected industry detail

[In thousands]

Industry	Not seasonally adjusted				Seasonally adjusted				Change from: Feb.2023 - Mar.2023 ^P
	Mar. 2022	Jan. 2023	Feb. 2023 ^P	Mar. 2023 ^P	Mar. 2022	Jan. 2023	Feb. 2023 ^P	Mar. 2023 ^P	
Total nonfarm.....	150,411	152,839	153,997	154,517	151,424	155,007	155,333	155,569	236
Total private.....	128,085	130,515	131,256	131,686	129,351	132,557	132,823	133,012	189
Goods-producing.....	20,719	21,061	21,153	21,221	20,997	21,502	21,513	21,506	-7
Mining and logging.....	583	622	624	629	589	632	632	635	3
Logging.....	45.6	46.6	46.6	46.7	45.8	46.4	46.2	46.6	0.4
Mining, quarrying, and oil and gas extraction..	537.5	575.2	577.1	582.1	543.4	585.4	586.2	588.0	1.8
Oil and gas extraction.....	112.1	116.7	116.6	116.8	112.6	117.5	117.4	117.5	0.1
Mining (except oil and gas).....	176.5	180.9	182.4	183.3	180.7	186.7	187.7	187.5	-0.2
Coal mining.....	39.7	40.9	41.2	41.3	39.8	41.0	41.1	41.3	0.2
Metal ore mining.....	42.3	43.5	43.5	43.7	42.5	43.8	43.8	43.9	0.1
Nonmetallic mineral mining and quarrying.....	94.5	96.5	97.7	98.3	98.4	101.9	102.7	102.3	-0.4
Support activities for mining.....	248.9	277.6	278.1	282.0	250.1	281.2	281.1	283.0	1.9
Construction.....	7,463	7,550	7,603	7,656	7,692	7,885	7,897	7,888	-9
Construction of buildings.....	1,702.1	1,751.1	1,754.5	1,757.8	1,739.2	1,796.6	1,796.4	1,794.4	-2.0
Residential building construction.....	893.5	910.2	911.3	913.2	913.6	935.8	933.4	934.2	0.8
Nonresidential building construction.....	808.6	840.9	843.2	844.6	825.6	860.8	863.0	860.2	-2.8
Heavy and civil engineering construction.....	1,001.7	986.9	1,013.0	1,043.1	1,066.2	1,087.5	1,097.1	1,104.2	7.1
Specialty trade contractors.....	4,758.7	4,812.2	4,835.2	4,854.8	4,886.9	5,001.1	5,003.0	4,989.1	-13.9
Residential specialty trade contractors.....	2,233.5	2,235.2	2,250.5	2,252.0	2,285.6	2,316.2	2,319.1	2,311.3	-7.8
Nonresidential specialty trade contractors...	2,525.2	2,577.0	2,584.7	2,602.8	2,601.3	2,684.9	2,683.9	2,677.8	-6.1
Manufacturing.....	12,673	12,889	12,926	12,936	12,716	12,985	12,984	12,983	-1
Durable goods.....	7,888	8,053	8,072	8,078	7,902	8,096	8,094	8,095	1
Wood product manufacturing.....	427.2	426.7	424.3	425.0	428.4	428.7	426.7	426.7	0.0
Nonmetallic mineral product manufacturing.....	408.6	423.6	424.4	425.2	415.5	433.7	433.9	431.7	-2.2
Primary metal manufacturing.....	360.4	364.5	365.8	368.7	359.8	366.0	366.3	368.1	1.8
Fabricated metal product manufacturing...	1,420.4	1,444.1	1,446.6	1,444.4	1,420.6	1,450.7	1,449.5	1,445.4	-4.1
Machinery manufacturing.....	1,094.2	1,121.1	1,122.9	1,127.5	1,096.6	1,125.4	1,125.6	1,129.4	3.8
Computer and electronic product manufacturing.....	1,072.8	1,095.9	1,099.7	1,096.6	1,075.4	1,099.9	1,101.3	1,099.5	-1.8
Computer and peripheral equipment manufacturing.....	158.9	167.2	167.1	167.2	159.8	167.3	167.7	168.4	0.7
Communications equipment manufacturing.....	85.8	83.7	84.0	85.3	85.4	84.1	84.4	84.8	0.4
Semiconductor and other electronic component manufacturing.....	378.7	391.7	392.2	388.5	379.3	393.5	392.7	389.5	-3.2
Navigational, measuring, electromedical, and control instruments manufacturing.....	418.5	420.9	423.8	422.9	419.4	422.1	423.5	423.8	0.3
Manufacturing and reproducing magnetic and optical media and audio and video equipment manufacturing.....	30.9	32.4	32.6	32.7	31.5	32.8	33.0	33.1	0.1
Electrical equipment, appliance, and component manufacturing.....	401.5	405.2	404.2	403.8	402.0	406.5	406.5	404.7	-1.8
Transportation equipment manufacturing ¹ ...	1,696.7	1,771.1	1,782.8	1,787.8	1,695.4	1,777.5	1,780.0	1,786.4	6.4
Motor vehicles and parts ²	996.9	1,040.7	1,047.1	1,049.8	995.2	1,043.5	1,044.8	1,048.5	3.7
Furniture and related product manufacturing.....	382.6	369.4	368.7	368.2	382.4	372.3	369.5	369.3	-0.2
Miscellaneous manufacturing.....	623.8	631.3	632.2	630.9	626.3	635.6	634.8	633.9	-0.9
Nondurable goods.....	4,785	4,836	4,854	4,858	4,814	4,889	4,890	4,888	-2
Food manufacturing.....	1,665.6	1,708.0	1,715.7	1,714.7	1,681.4	1,724.6	1,726.0	1,729.4	3.4
Textile mills.....	98.4	96.1	94.5	95.5	98.8	96.9	95.5	95.9	0.4
Textile product mills.....	106.1	103.3	103.4	102.2	106.3	103.6	103.6	102.3	-1.3
Apparel manufacturing.....	92.9	92.1	92.9	93.6	93.6	94.0	93.0	93.9	0.9
Paper manufacturing.....	361.5	356.7	356.4	358.4	361.5	357.6	356.8	358.5	1.7
Printing and related support activities.....	375.6	377.9	378.8	380.5	377.2	381.5	382.0	382.1	0.1
Petroleum and coal products manufacturing.....	102.6	100.2	101.4	103.8	105.6	104.4	105.5	106.4	0.9
Chemical manufacturing.....	894.9	909.9	917.2	912.4	894.8	914.3	917.4	913.4	-4.0
Plastics and rubber products manufacturing.....	750.8	749.9	748.1	748.0	749.3	755.3	750.9	748.7	-2.2

See footnotes at end of table.

ESTABLISHMENT DATA

Table B-1. Employees on nonfarm payrolls by industry sector and selected industry detail

— Continued

[In thousands]

Industry	Not seasonally adjusted				Seasonally adjusted				Change from: Feb.2023 - Mar.2023 ^P
	Mar. 2022	Jan. 2023	Feb. 2023 ^P	Mar. 2023 ^P	Mar. 2022	Jan. 2023	Feb. 2023 ^P	Mar. 2023 ^P	
Nondurable goods - Continued									
Beverage, tobacco, and leather and allied product manufacturing.....	336.8	342.3	345.8	348.5	345.1	357.1	358.8	357.8	-1.0
Private service-providing.....	107,366	109,454	110,103	110,465	108,354	111,055	111,310	111,506	196
Trade, transportation, and utilities.....	28,327	28,758	28,638	28,601	28,600	28,828	28,859	28,863	4
Wholesale trade.....	5,890.4	5,990.0	6,011.2	6,027.5	5,917.9	6,037.7	6,048.6	6,055.3	6.7
Merchant wholesalers, durable goods.....	3,249.6	3,315.9	3,327.7	3,333.8	3,259.3	3,335.2	3,340.4	3,344.5	4.1
Merchant wholesalers, nondurable goods....	2,134.0	2,151.8	2,158.4	2,168.0	2,149.0	2,177.1	2,180.5	2,182.3	1.8
Wholesale trade agents and brokers.....	506.8	522.3	525.1	525.7	509.6	525.4	527.7	528.5	0.8
Retail trade.....	15,352.1	15,453.6	15,395.7	15,358.1	15,542.0	15,500.1	15,541.4	15,526.8	-14.6
Motor vehicle and parts dealers.....	1,995.5	2,002.2	2,007.7	2,016.8	2,000.6	2,025.1	2,023.7	2,023.2	-0.5
Automobile dealers.....	1,253.3	1,247.5	1,251.3	1,252.0	1,252.9	1,256.6	1,255.4	1,253.0	-2.4
Other motor vehicle dealers.....	171.3	168.9	170.1	173.8	174.8	179.0	178.0	177.8	-0.2
Automotive parts, accessories, and tire retailers.....	570.9	585.8	586.3	591.0	572.8	589.5	590.4	592.3	1.9
Building material and garden equipment and supplies dealers.....	1,430.8	1,356.9	1,355.4	1,384.0	1,426.9	1,406.0	1,398.1	1,389.6	-8.5
Food and beverage retailers.....	3,159.9	3,232.2	3,236.0	3,220.4	3,182.3	3,242.6	3,246.6	3,240.2	-6.4
Furniture, home furnishings, electronics, and appliance retailers.....	915.6	884.2	877.1	867.3	917.7	876.8	878.7	870.0	-8.7
Furniture and home furnishings retailers...	466.3	450.1	446.4	443.6	467.7	445.9	445.6	444.9	-0.7
Electronics and appliance retailers.....	449.3	434.1	430.7	423.7	453.0	428.7	429.0	428.8	-0.2
General merchandise retailers.....	3,150.4	3,115.2	3,128.3	3,106.1	3,212.5	3,082.2	3,125.1	3,138.6	13.5
Department stores.....	942.1	953.1	932.7	931.6	983.6	928.5	948.3	963.1	14.8
Warehouse clubs, supercenters, and other general merchandise retailers....	2,208.3	2,162.1	2,195.6	2,174.5	2,228.9	2,153.6	2,176.8	2,175.6	-1.2
Health and personal care retailers.....	1,101.1	1,118.1	1,106.7	1,099.3	1,106.3	1,106.7	1,106.7	1,104.4	-2.3
Gasoline stations and fuel dealers.....	1,013.6	1,053.2	1,050.1	1,045.6	1,025.1	1,061.8	1,060.0	1,057.7	-2.3
Clothing, clothing accessories, shoe, and jewelry retailers.....	1,097.4	1,169.3	1,123.8	1,122.9	1,142.8	1,158.7	1,162.3	1,165.2	2.9
Sporting goods, hobby, musical instrument, book, and miscellaneous retailers.....	1,487.8	1,522.3	1,510.6	1,495.7	1,527.8	1,540.2	1,540.2	1,537.9	-2.3
Transportation and warehousing.....	6,533.9	6,762.6	6,681.4	6,662.3	6,588.7	6,736.6	6,716.1	6,726.5	10.4
Air transportation.....	487.2	522.0	523.7	533.6	488.2	527.1	528.7	534.4	5.7
Rail transportation.....	145.9	148.6	149.4	149.4	146.1	149.2	149.6	149.4	-0.2
Water transportation.....	60.3	63.0	63.0	63.9	62.2	65.8	66.1	66.2	0.1
Truck transportation.....	1,537.8	1,588.6	1,581.0	1,584.6	1,561.8	1,611.4	1,606.3	1,612.0	5.7
Transit and ground passenger transportation.....	416.0	444.6	446.6	449.8	405.8	438.0	435.4	438.6	3.2
Pipeline transportation.....	50.5	47.3	47.8	48.0	50.5	48.0	48.3	48.0	-0.3
Scenic and sightseeing transportation.....	23.5	27.0	27.2	29.5	29.0	33.2	33.6	34.6	1.0
Support activities for transportation.....	776.8	813.2	809.7	807.3	779.2	815.6	811.1	811.4	0.3
Couriers and messengers.....	1,097.3	1,166.5	1,094.2	1,081.9	1,131.0	1,115.1	1,114.6	1,121.3	6.7
Warehousing and storage.....	1,938.6	1,941.8	1,938.8	1,914.3	1,934.9	1,933.2	1,922.4	1,910.6	-11.8
Utilities.....	551.0	551.9	549.3	553.0	551.7	553.7	552.5	554.0	1.5
Information.....	3,006	3,050	3,060	3,070	3,018	3,097	3,087	3,093	6
Motion picture and sound recording industries.....	438.1	418.9	433.1	448.2	450.0	452.8	453.5	462.4	8.9
Publishing industries.....	925.7	938.2	935.4	934.1	926.9	943.3	941.7	939.9	-1.8
Broadcasting and content providers.....	355.2	354.8	357.4	355.3	355.0	357.6	357.4	355.7	-1.7
Telecommunications.....	660.3	652.2	654.8	650.6	658.5	655.0	653.2	650.1	-3.1
Computing infrastructure providers, data processing, web hosting, and related services.....	448.4	484.4	482.2	481.3	448.2	485.5	481.5	482.6	1.1
Web search portals, libraries, archives, and other information services.....	178.2	201.5	197.4	200.2	178.9	202.8	200.0	202.1	2.1
Financial activities.....	8,949	9,046	9,047	9,041	8,997	9,100	9,099	9,098	-1
Finance and insurance.....	6,633.7	6,681.5	6,668.8	6,668.5	6,644.5	6,693.1	6,678.3	6,684.9	6.6
Monetary authorities-central bank.....	21.1	21.7	21.9	21.8	21.2	21.8	22.0	21.9	-0.1
Credit intermediation and related activities.....	2,701.9	2,678.3	2,673.1	2,665.4	2,703.9	2,678.9	2,670.8	2,669.8	-1.0

See footnotes at end of table.

ESTABLISHMENT DATA

Table B-1. Employees on nonfarm payrolls by industry sector and selected industry detail

— Continued

[In thousands]

Industry	Not seasonally adjusted				Seasonally adjusted				Change from: Feb.2023 - Mar.2023 ^P
	Mar. 2022	Jan. 2023	Feb. 2023 ^P	Mar. 2023 ^P	Mar. 2022	Jan. 2023	Feb. 2023 ^P	Mar. 2023 ^P	
Credit intermediation and related - Continued									
Depository credit intermediation ¹	1,755.6	1,783.3	1,787.7	1,785.0	1,756.1	1,782.9	1,785.1	1,785.7	0.6
Commercial banking.....	1,365.8	1,376.6	1,381.3	1,376.8	1,364.2	1,375.8	1,376.9	1,375.8	-1.1
Nondepository credit intermediation.....	610.4	577.1	569.0	568.3	613.2	579.0	571.7	571.8	0.1
Activities related to credit intermediation...	335.9	317.9	316.4	312.1	334.7	317.0	314.0	312.3	-1.7
Securities, commodity contracts, funds, trusts, and other financial vehicles, investments, and related activities.....	1,024.5	1,065.0	1,063.7	1,064.8	1,031.8	1,070.7	1,070.3	1,073.7	3.4
Insurance carriers and related activities.....	2,886.2	2,916.5	2,910.1	2,916.5	2,887.6	2,921.7	2,915.2	2,919.5	4.3
Real estate and rental and leasing.....	2,315.7	2,364.5	2,377.7	2,372.3	2,352.9	2,407.1	2,420.4	2,413.2	-7.2
Real estate.....	1,782.9	1,824.5	1,829.7	1,825.4	1,805.0	1,849.3	1,853.3	1,850.7	-2.6
Rental and leasing services.....	510.8	518.1	525.9	524.8	525.6	535.4	544.6	540.0	-4.6
Lessors of nonfinancial intangible assets (except copyrighted works).....	22.0	21.9	22.1	22.1	22.3	22.4	22.5	22.5	0.0
Professional and business services.....	22,207	22,468	22,642	22,677	22,439	22,858	22,913	22,952	39
Professional, scientific, and technical services.....	10,371.8	10,693.6	10,777.1	10,773.0	10,362.2	10,730.9	10,753.3	10,779.0	25.7
Legal services.....	1,164.6	1,175.2	1,174.4	1,172.8	1,171.0	1,180.8	1,181.5	1,180.9	-0.6
Accounting, tax preparation, bookkeeping, and payroll services.....	1,174.8	1,164.5	1,210.0	1,217.2	1,089.7	1,132.6	1,131.3	1,137.1	5.8
Architectural, engineering, and related services.....	1,560.2	1,628.9	1,634.2	1,640.1	1,583.0	1,650.8	1,657.6	1,664.3	6.7
Specialized design services.....	146.0	155.5	156.7	156.5	148.6	157.9	158.6	158.9	0.3
Computer systems design and related services.....	2,413.8	2,481.5	2,485.4	2,469.8	2,427.8	2,485.6	2,485.4	2,487.5	2.1
Management, scientific, and technical consulting services.....	1,743.2	1,829.4	1,843.7	1,841.7	1,758.1	1,841.4	1,850.9	1,858.5	7.6
Scientific research and development services.....	868.2	909.8	917.6	920.0	874.9	918.1	922.4	927.5	5.1
Advertising, public relations, and related services.....	480.8	487.8	491.8	490.4	481.9	494.3	494.3	492.2	-2.1
Other professional, scientific, and technical services.....	820.2	861.0	863.3	864.5	827.2	869.5	871.4	872.2	0.8
Management of companies and enterprises.....	2,472.7	2,507.5	2,507.0	2,509.2	2,481.3	2,515.9	2,518.3	2,518.7	0.4
Administrative and support and waste management and remediation services.....	9,362.5	9,266.8	9,358.3	9,395.2	9,595.8	9,611.1	9,641.3	9,654.3	13.0
Administrative and support services.....	8,895.4	8,790.3	8,874.9	8,910.1	9,124.9	9,126.2	9,152.5	9,165.8	13.3
Office administrative services.....	572.1	605.7	612.0	614.5	578.0	613.8	618.3	621.8	3.5
Facilities support services.....	154.8	159.2	161.5	163.7	154.7	159.9	161.8	162.9	1.1
Employment services ¹	3,869.6	3,728.2	3,770.5	3,752.2	3,938.2	3,844.7	3,855.0	3,857.4	2.4
Temporary help services.....	3,118.2	2,953.0	2,998.9	2,971.7	3,177.0	3,054.5	3,057.9	3,047.2	-10.7
Business support services.....	802.3	771.2	766.7	760.5	805.9	766.0	765.0	764.7	-0.3
Travel arrangement and reservation services.....	164.6	178.1	176.3	176.6	167.0	181.6	179.6	178.8	-0.8
Investigation and security services.....	941.1	969.7	969.4	968.9	944.5	980.2	976.5	972.2	-4.3
Services to buildings and dwellings.....	2,069.9	2,047.2	2,085.1	2,136.0	2,210.5	2,239.4	2,253.8	2,264.6	10.8
Other support services.....	321.0	331.0	333.4	337.7	326.0	340.7	342.6	343.4	0.8
Waste management and remediation services.....	467.1	476.5	483.4	485.1	470.9	484.9	488.8	488.5	-0.3
Private education and health services.....	24,162	24,750	25,127	25,204	24,050	24,938	25,023	25,088	65
Private educational services.....	3,884.0	3,779.8	4,037.3	4,062.9	3,742.8	3,890.4	3,902.5	3,917.1	14.6
Health care and social assistance.....	20,277.5	20,970.1	21,089.5	21,140.7	20,307.5	21,047.5	21,120.5	21,171.3	50.8
Health care ³	16,082.7	16,584.9	16,671.4	16,698.8	16,118.3	16,645.3	16,700.2	16,734.1	33.9
Ambulatory health care services.....	8,021.9	8,258.8	8,298.4	8,312.8	8,035.8	8,298.5	8,312.4	8,327.4	15.0
Offices of physicians.....	2,775.2	2,851.6	2,856.4	2,858.5	2,779.8	2,862.5	2,862.2	2,864.2	2.0
Offices of dentists.....	1,001.4	1,027.5	1,026.7	1,024.0	1,004.2	1,028.7	1,029.7	1,027.2	-2.5
Offices of other health practitioners.....	1,063.5	1,106.1	1,121.0	1,118.8	1,067.7	1,113.6	1,121.9	1,123.8	1.9
Outpatient care centers.....	1,025.0	1,059.8	1,062.4	1,061.1	1,024.1	1,061.4	1,061.3	1,060.6	-0.7
Medical and diagnostic laboratories.....	322.1	321.8	324.3	321.0	322.8	321.7	323.6	321.9	-1.7
Home health care services.....	1,513.5	1,556.9	1,573.1	1,593.3	1,517.0	1,574.9	1,579.4	1,594.6	15.2
Other ambulatory health care services.....	321.2	335.1	334.5	336.1	320.2	335.7	334.2	335.2	1.0
Hospitals.....	5,105.0	5,243.9	5,274.4	5,285.2	5,108.9	5,254.6	5,279.8	5,290.7	10.9

See footnotes at end of table.

ESTABLISHMENT DATA

Table B-1. Employees on nonfarm payrolls by industry sector and selected industry detail

— Continued

[In thousands]

Industry	Not seasonally adjusted				Seasonally adjusted				Change from: Feb.2023 - Mar.2023 ^p
	Mar. 2022	Jan. 2023	Feb. 2023 ^p	Mar. 2023 ^p	Mar. 2022	Jan. 2023	Feb. 2023 ^p	Mar. 2023 ^p	
Health care - Continued									
Nursing and residential care facilities.....	2,955.8	3,082.2	3,098.6	3,100.8	2,973.6	3,092.2	3,108.0	3,116.0	8.0
Skilled nursing care facilities.....	1,331.5	1,380.4	1,385.1	1,384.2	1,342.6	1,382.9	1,389.3	1,392.7	3.4
Residential intellectual and developmental disability, mental health, and substance abuse facilities.....	594.3	620.0	621.9	621.9	595.6	623.4	623.9	623.6	-0.3
Continuing care retirement communities and assisted living facilities for the elderly.....	879.2	927.4	936.1	939.3	884.2	930.6	939.7	944.0	4.3
Other residential care facilities.....	150.8	154.4	155.5	155.4	151.3	155.3	155.1	155.7	0.6
Social assistance.....	4,194.8	4,385.2	4,418.1	4,441.9	4,189.2	4,402.2	4,420.3	4,437.2	16.9
Individual and family services.....	2,776.6	2,918.4	2,939.9	2,952.0	2,776.8	2,927.8	2,941.9	2,951.9	10.0
Community food and housing, and emergency and other relief services....	201.4	210.8	211.9	214.2	200.2	210.6	210.3	212.5	2.2
Vocational rehabilitation services.....	269.3	273.3	275.5	277.9	272.0	278.4	278.7	279.6	0.9
Child care services.....	947.5	982.7	990.8	997.8	940.2	985.4	989.4	993.3	3.9
Leisure and hospitality.....	15,103	15,639	15,823	16,084	15,590	16,415	16,505	16,577	72
Arts, entertainment, and recreation.....	2,083.0	2,143.1	2,187.8	2,257.8	2,266.5	2,407.3	2,426.1	2,442.3	16.2
Performing arts, spectator sports, and related industries.....	455.2	446.0	471.1	492.1	484.3	513.4	518.7	521.7	3.0
Museums, historical sites, and similar institutions.....	144.7	152.7	154.0	161.1	154.8	166.8	168.4	170.7	2.3
Amusement, gambling, and recreation industries.....	1,483.1	1,544.4	1,562.7	1,604.6	1,627.4	1,727.1	1,739.0	1,749.9	10.9
Accommodation and food services.....	13,019.6	13,496.1	13,635.3	13,826.2	13,323.6	14,008.0	14,079.3	14,134.8	55.5
Accommodation.....	1,652.0	1,752.7	1,772.8	1,791.9	1,727.0	1,854.6	1,865.7	1,870.9	5.2
Food services and drinking places.....	11,367.6	11,743.4	11,862.5	12,034.3	11,596.6	12,153.4	12,213.6	12,263.9	50.3
Other services.....	5,612	5,743	5,766	5,788	5,660	5,819	5,824	5,835	11
Repair and maintenance.....	1,373.3	1,406.1	1,414.2	1,423.3	1,380.9	1,422.2	1,426.6	1,430.5	3.9
Personal and laundry services.....	1,442.1	1,508.1	1,511.7	1,514.5	1,456.6	1,531.4	1,529.3	1,529.5	0.2
Religious, grantmaking, civic, professional, and similar organizations.....	2,796.3	2,828.9	2,839.8	2,850.2	2,822.8	2,864.9	2,868.2	2,874.7	6.5
Government.....	22,326	22,324	22,741	22,831	22,073	22,450	22,510	22,557	47
Federal.....	2,853	2,873	2,886	2,889	2,873	2,886	2,895	2,903	8
Federal, except U.S. Postal Service.....	2,246.3	2,273.4	2,281.7	2,284.9	2,265.4	2,287.5	2,293.5	2,299.9	6.4
U.S. Postal Service.....	606.8	599.2	604.1	604.5	607.6	598.4	601.5	603.3	1.8
State government.....	5,187	5,057	5,283	5,313	5,063	5,156	5,171	5,184	13
State government education.....	2,554.5	2,403.1	2,620.9	2,637.8	2,422.4	2,484.9	2,494.9	2,502.0	7.1
State government, excluding education.....	2,632.3	2,654.0	2,662.3	2,675.6	2,640.4	2,670.7	2,676.1	2,681.5	5.4
Local government.....	14,286	14,394	14,572	14,629	14,137	14,408	14,444	14,470	26
Local government education.....	8,012.9	8,002.3	8,159.2	8,185.6	7,759.5	7,891.4	7,913.8	7,925.8	12.0
Local government, excluding education.....	6,273.0	6,391.2	6,413.0	6,443.1	6,377.8	6,516.4	6,530.1	6,544.1	14.0

¹ Includes other industries, not shown separately.

² Includes motor vehicles, motor vehicle bodies and trailers, and motor vehicle parts.

³ Includes ambulatory health care services, hospitals, and nursing and residential care facilities.

p Preliminary

NOTE: Data have been revised to reflect March 2022 benchmark levels and updated seasonal adjustment factors.

ESTABLISHMENT DATA

Table B-2. Average weekly hours and overtime of all employees on private nonfarm payrolls by industry sector, seasonally adjusted

Industry	Mar. 2022	Jan. 2023	Feb. 2023 ^p	Mar. 2023 ^p
AVERAGE WEEKLY HOURS				
Total private.....	34.7	34.6	34.5	34.4
Goods-producing.....	40.1	40.2	40.0	39.9
Mining and logging.....	46.0	46.3	45.9	46.1
Construction.....	38.7	39.2	39.0	38.9
Manufacturing.....	40.7	40.5	40.3	40.3
Durable goods.....	41.0	41.0	40.8	40.7
Nondurable goods.....	40.1	39.8	39.5	39.6
Private service-providing.....	33.6	33.5	33.4	33.3
Trade, transportation, and utilities.....	34.1	34.3	34.1	34.2
Wholesale trade.....	39.3	38.9	38.8	38.8
Retail trade.....	30.2	30.4	30.2	30.3
Transportation and warehousing.....	37.9	38.5	38.4	38.2
Utilities.....	42.3	42.0	42.2	42.5
Information.....	36.9	36.6	36.4	36.3
Financial activities.....	37.6	37.4	37.4	37.4
Professional and business services.....	36.7	36.5	36.5	36.3
Private education and health services.....	33.5	33.5	33.4	33.4
Leisure and hospitality.....	25.9	25.8	25.6	25.3
Other services.....	32.3	32.3	32.2	32.2
AVERAGE OVERTIME HOURS				
Manufacturing.....	3.5	3.0	3.0	3.0
Durable goods.....	3.5	3.1	3.1	3.1
Nondurable goods.....	3.4	2.9	2.8	2.8

p Preliminary

NOTE: Data have been revised to reflect March 2022 benchmark levels and updated seasonal adjustment factors.

ESTABLISHMENT DATA

Table B-3. Average hourly and weekly earnings of all employees on private nonfarm payrolls by industry sector, seasonally adjusted

Industry	Average hourly earnings				Average weekly earnings			
	Mar. 2022	Jan. 2023	Feb. 2023 ^p	Mar. 2023 ^p	Mar. 2022	Jan. 2023	Feb. 2023 ^p	Mar. 2023 ^p
Total private.....	\$31.83	\$33.02	\$33.09	\$33.18	\$1,104.50	\$1,142.49	\$1,141.61	\$1,141.39
Goods-producing.....	32.04	33.28	33.34	33.50	1,284.80	1,337.86	1,333.60	1,336.65
Mining and logging.....	35.58	36.97	37.17	37.24	1,636.68	1,711.71	1,706.10	1,716.76
Construction.....	34.14	35.69	35.83	35.98	1,321.22	1,399.05	1,397.37	1,399.62
Manufacturing.....	30.64	31.67	31.67	31.83	1,247.05	1,282.64	1,276.30	1,282.75
Durable goods.....	32.19	33.18	33.19	33.39	1,319.79	1,360.38	1,354.15	1,358.97
Nondurable goods.....	28.03	29.09	29.06	29.17	1,124.00	1,157.78	1,147.87	1,155.13
Private service-providing.....	31.78	32.96	33.03	33.10	1,067.81	1,104.16	1,103.20	1,102.23
Trade, transportation, and utilities.....	27.44	28.38	28.55	28.59	935.70	973.43	973.56	977.78
Wholesale trade.....	34.76	36.24	36.15	36.23	1,366.07	1,409.74	1,402.62	1,405.72
Retail trade.....	22.85	23.52	23.78	23.79	690.07	715.01	718.16	720.84
Transportation and warehousing.....	27.45	28.27	28.45	28.47	1,040.36	1,088.40	1,092.48	1,087.55
Utilities.....	46.88	48.82	49.02	49.48	1,983.02	2,050.44	2,068.64	2,102.90
Information.....	45.48	47.75	47.94	47.96	1,678.21	1,747.65	1,745.02	1,740.95
Financial activities.....	41.06	42.51	42.54	42.67	1,543.86	1,589.87	1,591.00	1,595.86
Professional and business services.....	38.25	39.68	39.76	39.95	1,403.78	1,448.32	1,451.24	1,450.19
Private education and health services.....	31.43	32.70	32.66	32.67	1,052.91	1,095.45	1,090.84	1,091.18
Leisure and hospitality.....	19.76	20.78	20.80	20.96	511.78	536.12	532.48	530.29
Other services.....	28.36	29.50	29.51	29.24	916.03	952.85	950.22	941.53

p Preliminary

NOTE: Data have been revised to reflect March 2022 benchmark levels and updated seasonal adjustment factors.

ESTABLISHMENT DATA

Table B-4. Indexes of aggregate weekly hours and payrolls for all employees on private nonfarm payrolls by industry sector, seasonally adjusted

[2007=100]

Industry	Index of aggregate weekly hours ¹					Index of aggregate weekly payrolls ²				
	Mar. 2022	Jan. 2023	Feb. 2023 ^p	Mar. 2023 ^p	Percent change from: Feb. 2023 - Mar. 2023 ^p	Mar. 2022	Jan. 2023	Feb. 2023 ^p	Mar. 2023 ^p	Percent change from: Feb. 2023 - Mar. 2023 ^p
Total private.....	112.7	115.1	115.0	114.9	-0.1	171.5	181.8	182.0	182.2	0.1
Goods-producing.....	95.9	98.5	98.0	97.8	-0.2	138.9	148.1	147.7	148.0	0.2
Mining and logging.....	85.1	91.9	91.2	92.0	0.9	121.6	136.5	136.0	137.5	1.1
Construction.....	102.6	106.5	106.2	105.8	-0.4	152.2	165.2	165.3	165.4	0.1
Manufacturing.....	93.1	94.6	94.1	94.1	0.0	132.7	139.3	138.6	139.3	0.5
Durable goods.....	91.2	93.5	93.0	92.8	-0.2	130.4	137.7	137.0	137.6	0.4
Nondurable goods.....	96.4	97.1	96.4	96.6	0.2	137.0	143.4	142.2	143.0	0.6
Private service-providing.....	117.2	119.8	119.7	119.5	-0.2	181.1	191.9	192.2	192.3	0.1
Trade, transportation, and utilities.....	106.6	108.0	107.5	107.9	0.4	157.7	165.3	165.5	166.3	0.5
Wholesale trade.....	102.6	103.6	103.5	103.6	0.1	149.2	157.1	156.5	157.1	0.4
Retail trade.....	95.5	95.9	95.5	95.8	0.3	144.3	149.2	150.2	150.6	0.3
Transportation and warehousing.....	143.5	149.0	148.2	147.6	-0.4	200.4	214.3	214.5	213.8	-0.3
Utilities.....	101.0	100.6	100.9	101.9	1.0	156.4	162.3	163.4	166.5	1.9
Information.....	101.7	103.5	102.6	102.6	0.0	164.7	176.0	175.2	175.1	-0.1
Financial activities.....	110.8	111.5	111.5	111.5	0.0	177.5	184.9	185.0	185.5	0.3
Professional and business services.....	128.8	130.5	130.8	130.3	-0.4	199.6	209.8	210.7	210.9	0.1
Private education and health services..	131.6	136.4	136.5	136.8	0.2	198.9	214.6	214.4	215.0	0.3
Leisure and hospitality.....	115.2	120.8	120.6	119.7	-0.7	183.7	202.6	202.3	202.4	0.0
Other services.....	105.4	108.4	108.1	108.3	0.2	163.8	175.2	174.9	173.6	-0.7

¹ The indexes of aggregate weekly hours are calculated by dividing the current month's estimates of aggregate hours by the corresponding 2007 annual average aggregate hours. Aggregate hours estimates are the product of estimates of average weekly hours and employment.

² The indexes of aggregate weekly payrolls are calculated by dividing the current month's estimates of aggregate weekly payrolls by the corresponding 2007 annual average aggregate weekly payrolls. Aggregate payrolls estimates are the product of estimates of average hourly earnings, average weekly hours, and employment.

p Preliminary

NOTE: Data have been revised to reflect March 2022 benchmark levels and updated seasonal adjustment factors.

ESTABLISHMENT DATA

Table B-5. Employment of women on nonfarm payrolls by industry sector, seasonally adjusted

Industry	Women employees (in thousands)				Percent of all employees			
	Mar. 2022	Jan. 2023	Feb. 2023 ^p	Mar. 2023 ^p	Mar. 2022	Jan. 2023	Feb. 2023 ^p	Mar. 2023 ^p
Total nonfarm.....	75,232	77,186	77,338	77,480	49.7	49.8	49.8	49.8
Total private.....	62,415	64,104	64,215	64,320	48.3	48.4	48.3	48.4
Goods-producing.....	4,815	4,966	4,971	4,978	22.9	23.1	23.1	23.1
Mining and logging.....	75	82	82	83	12.7	13.0	13.0	13.1
Construction.....	1,076	1,115	1,116	1,120	14.0	14.1	14.1	14.2
Manufacturing.....	3,664	3,769	3,773	3,775	28.8	29.0	29.1	29.1
Durable goods.....	1,951	2,014	2,016	2,016	24.7	24.9	24.9	24.9
Nondurable goods.....	1,713	1,755	1,757	1,759	35.6	35.9	35.9	36.0
Private service-providing.....	57,600	59,138	59,244	59,342	53.2	53.3	53.2	53.2
Trade, transportation, and utilities.....	11,241	11,338	11,354	11,359	39.3	39.3	39.3	39.4
Wholesale trade.....	1,797.0	1,850.7	1,859.3	1,866.2	30.4	30.7	30.7	30.8
Retail trade.....	7,533.8	7,512.9	7,514.9	7,508.9	48.5	48.5	48.4	48.4
Transportation and warehousing.....	1,771.9	1,829.9	1,835.6	1,837.5	26.9	27.2	27.3	27.3
Utilities.....	138.2	144.7	144.5	145.9	25.0	26.1	26.2	26.3
Information.....	1,198	1,262	1,254	1,256	39.7	40.7	40.6	40.6
Financial activities.....	5,022	5,074	5,061	5,061	55.8	55.8	55.6	55.6
Professional and business services.....	10,376	10,538	10,572	10,587	46.2	46.1	46.1	46.1
Private education and health services.....	18,486	19,161	19,213	19,264	76.9	76.8	76.8	76.8
Leisure and hospitality.....	8,245	8,645	8,665	8,687	52.9	52.7	52.5	52.4
Other services.....	3,032	3,120	3,125	3,128	53.6	53.6	53.7	53.6
Government.....	12,817	13,082	13,123	13,160	58.1	58.3	58.3	58.3

p Preliminary

NOTE: Data have been revised to reflect March 2022 benchmark levels and updated seasonal adjustment factors.

ESTABLISHMENT DATA

Table B-6. Employment of production and nonsupervisory employees on private nonfarm payrolls by industry sector, seasonally adjusted¹

[In thousands]

Industry	Mar. 2022	Jan. 2023	Feb. 2023 ^p	Mar. 2023 ^p
Total private.....	105,365	107,832	107,995	108,149
Goods-producing.....	15,032	15,435	15,419	15,422
Mining and logging.....	447	478	478	479
Construction.....	5,670	5,820	5,808	5,810
Manufacturing.....	8,915	9,137	9,133	9,133
Durable goods.....	5,471	5,625	5,623	5,627
Nondurable goods.....	3,444	3,512	3,510	3,506
Private service-providing.....	90,333	92,397	92,576	92,727
Trade, transportation, and utilities.....	24,179	24,276	24,351	24,348
Wholesale trade.....	4,712.4	4,796.2	4,805.5	4,799.9
Retail trade.....	13,248.3	13,182.9	13,233.0	13,216.0
Transportation and warehousing.....	5,778.4	5,856.3	5,872.2	5,891.3
Utilities.....	439.8	440.9	439.8	440.3
Information.....	2,403	2,465	2,457	2,470
Financial activities.....	6,775	6,851	6,854	6,850
Professional and business services.....	17,920	18,138	18,142	18,129
Private education and health services.....	20,936	21,706	21,758	21,804
Leisure and hospitality.....	13,527	14,229	14,274	14,386
Other services.....	4,593	4,732	4,740	4,740

¹ Data relate to production employees in mining and logging and manufacturing, construction employees in construction, and nonsupervisory employees in the service-providing industries. These groups account for approximately four-fifths of the total employment on private nonfarm payrolls.

^p Preliminary

NOTE: Data have been revised to reflect March 2022 benchmark levels and updated seasonal adjustment factors.

ESTABLISHMENT DATA

Table B-7. Average weekly hours and overtime of production and nonsupervisory employees on private nonfarm payrolls by industry sector, seasonally adjusted¹

Industry	Mar. 2022	Jan. 2023	Feb. 2023 ^p	Mar. 2023 ^p
AVERAGE WEEKLY HOURS				
Total private.....	34.1	34.1	33.9	33.9
Goods-producing.....	40.8	40.7	40.6	40.5
Mining and logging.....	47.6	47.7	47.6	48.0
Construction.....	39.3	39.9	39.9	39.6
Manufacturing.....	41.5	40.9	40.7	40.7
Durable goods.....	41.7	41.1	41.0	40.9
Nondurable goods.....	41.0	40.5	40.2	40.4
Private service-providing.....	33.0	33.0	32.8	32.8
Trade, transportation, and utilities.....	34.1	34.4	34.1	34.1
Wholesale trade.....	39.4	38.9	38.8	38.7
Retail trade.....	30.5	30.8	30.5	30.5
Transportation and warehousing.....	37.5	38.3	37.8	37.9
Utilities.....	42.0	42.7	42.9	42.7
Information.....	36.7	36.1	36.0	35.9
Financial activities.....	37.5	37.1	37.2	37.2
Professional and business services.....	36.3	36.4	36.3	36.3
Private education and health services.....	32.7	32.7	32.6	32.7
Leisure and hospitality.....	24.8	24.6	24.3	24.2
Other services.....	31.3	31.3	31.3	31.2
AVERAGE OVERTIME HOURS				
Manufacturing.....	4.3	3.8	3.7	3.7
Durable goods.....	4.5	3.8	3.9	3.9
Nondurable goods.....	4.0	3.7	3.5	3.5

¹ Data relate to production employees in mining and logging and manufacturing, construction employees in construction, and nonsupervisory employees in the service-providing industries. These groups account for approximately four-fifths of the total employment on private nonfarm payrolls.

p Preliminary

NOTE: Data have been revised to reflect March 2022 benchmark levels and updated seasonal adjustment factors.

ESTABLISHMENT DATA

Table B-8. Average hourly and weekly earnings of production and nonsupervisory employees on private nonfarm payrolls by industry sector, seasonally adjusted¹

Industry	Average hourly earnings				Average weekly earnings			
	Mar. 2022	Jan. 2023	Feb. 2023 ^p	Mar. 2023 ^p	Mar. 2022	Jan. 2023	Feb. 2023 ^p	Mar. 2023 ^p
Total private.....	\$27.12	\$28.29	\$28.41	\$28.50	\$924.79	\$964.69	\$963.10	\$966.15
Goods-producing.....	27.54	28.91	28.96	29.10	1,123.63	1,176.64	1,175.78	1,178.55
Mining and logging.....	32.27	33.45	33.54	33.51	1,536.05	1,595.57	1,596.50	1,608.48
Construction.....	31.72	33.44	33.61	33.82	1,246.60	1,334.26	1,341.04	1,339.27
Manufacturing.....	24.74	25.82	25.78	25.91	1,026.71	1,056.04	1,049.25	1,054.54
Durable goods.....	25.89	26.96	26.97	27.07	1,079.61	1,108.06	1,105.77	1,107.16
Nondurable goods.....	22.90	23.96	23.84	24.03	938.90	970.38	958.37	970.81
Private service-providing.....	27.04	28.16	28.29	28.38	892.32	929.28	927.91	930.86
Trade, transportation, and utilities.....	23.63	24.67	24.85	24.91	805.78	848.65	847.39	849.43
Wholesale trade.....	28.77	29.99	30.15	30.08	1,133.54	1,166.61	1,169.82	1,164.10
Retail trade.....	19.42	20.22	20.34	20.40	592.31	622.78	620.37	622.20
Transportation and warehousing.....	25.57	26.72	27.01	27.14	958.88	1,023.38	1,020.98	1,028.61
Utilities.....	41.38	43.36	43.50	43.83	1,737.96	1,851.47	1,866.15	1,871.54
Information.....	37.21	38.82	38.85	38.81	1,365.61	1,401.40	1,398.60	1,393.28
Financial activities.....	31.51	32.93	33.24	33.26	1,181.63	1,221.70	1,236.53	1,237.27
Professional and business services.....	32.11	33.47	33.63	33.88	1,165.59	1,218.31	1,220.77	1,229.84
Private education and health services.....	28.54	29.74	29.76	29.79	933.26	972.50	970.18	974.13
Leisure and hospitality.....	17.51	18.31	18.33	18.51	434.25	450.43	445.42	447.94
Other services.....	24.56	25.33	25.40	25.15	768.73	792.83	795.02	784.68

¹ Data relate to production employees in mining and logging and manufacturing, construction employees in construction, and nonsupervisory employees in the service-providing industries. These groups account for approximately four-fifths of the total employment on private nonfarm payrolls.

p Preliminary

NOTE: Data have been revised to reflect March 2022 benchmark levels and updated seasonal adjustment factors.

ESTABLISHMENT DATA

Table B-9. Indexes of aggregate weekly hours and payrolls for production and nonsupervisory employees on private nonfarm payrolls by industry sector, seasonally adjusted¹

[2002=100]

Industry	Index of aggregate weekly hours ²					Index of aggregate weekly payrolls ³				
	Mar. 2022	Jan. 2023	Feb. 2023 ^p	Mar. 2023 ^p	Percent change from: Feb. 2023 - Mar. 2023 ^p	Mar. 2022	Jan. 2023	Feb. 2023 ^p	Mar. 2023 ^p	Percent change from: Feb. 2023 - Mar. 2023 ^p
Total private.....	119.7	122.5	122.0	122.2	0.2	217.0	231.7	231.7	232.7	0.4
Goods-producing.....	93.7	96.0	95.7	95.4	-0.3	158.0	169.9	169.6	170.1	0.3
Mining and logging.....	113.1	121.2	120.9	122.2	1.1	212.2	235.7	235.9	238.1	0.9
Construction.....	111.6	116.3	116.0	115.2	-0.7	191.1	209.9	210.6	210.4	-0.1
Manufacturing.....	84.9	85.8	85.3	85.3	0.0	137.4	144.9	143.9	144.6	0.5
Durable goods.....	85.7	86.9	86.6	86.5	-0.1	138.5	146.2	145.8	146.1	0.2
Nondurable goods.....	83.2	83.8	83.1	83.5	0.5	134.6	141.9	140.1	141.7	1.1
Private service-providing.....	127.0	129.9	129.4	129.6	0.2	235.6	250.9	251.0	252.3	0.5
Trade, transportation, and utilities.....	115.4	116.9	116.2	116.2	0.0	194.9	206.1	206.4	206.9	0.2
Wholesale trade.....	110.2	110.7	110.7	110.2	-0.5	187.1	196.0	196.9	195.7	-0.6
Retail trade.....	102.5	102.9	102.3	102.2	-0.1	170.6	178.5	178.5	178.8	0.2
Transportation and warehousing.....	164.0	169.8	168.0	169.0	0.6	266.9	288.7	288.8	291.9	1.1
Utilities.....	94.5	96.3	96.5	96.1	-0.4	163.2	174.2	175.2	175.9	0.4
Information.....	100.7	101.6	101.0	101.2	0.2	185.4	195.2	194.2	194.5	0.2
Financial activities.....	119.6	119.6	120.0	119.9	-0.1	231.8	242.4	245.4	245.4	0.0
Professional and business services.....	145.2	147.4	147.0	146.9	-0.1	277.3	293.4	294.1	296.0	0.6
Private education and health services..	146.0	151.3	151.2	152.0	0.5	275.0	297.1	297.1	298.9	0.6
Leisure and hospitality.....	122.9	128.2	127.1	127.5	0.3	244.3	266.6	264.5	268.1	1.4
Other services.....	100.8	103.9	104.1	103.7	-0.4	180.4	191.7	192.6	190.1	-1.3

¹ Data relate to production employees in mining and logging and manufacturing, construction employees in construction, and nonsupervisory employees in the service-providing industries. These groups account for approximately four-fifths of the total employment on private nonfarm payrolls.

² The indexes of aggregate weekly hours are calculated by dividing the current month's estimates of aggregate hours by the corresponding 2002 annual average aggregate hours. Aggregate hours estimates are the product of estimates of average weekly hours and employment.

³ The indexes of aggregate weekly payrolls are calculated by dividing the current month's estimates of aggregate weekly payrolls by the corresponding 2002 annual average aggregate weekly payrolls. Aggregate payrolls estimates are the product of estimates of average hourly earnings, average weekly hours, and employment.

p Preliminary

NOTE: Data have been revised to reflect March 2022 benchmark levels and updated seasonal adjustment factors.